



CONNECTING the DOTS ...

A guide to finding services
for people with disabilities
in Rhode Island





The Family Voices/RI Family to Family Health Information Center at Rhode Island Parent Information Network

Family Voices aims to achieve family-centered care for all children and youth with special health care needs and/or disabilities. Through our national network, we provide families tools to make informed decisions, advocate for improved public and private policies, build partnerships among professionals and families, and serve as a trusted resource on health care and family supports.

The Rhode Island Family to Family Health Information Center is designed to enhance community-based care for people with disabilities and ensure that families of children and youth with special health care needs will partner in decision-making at all levels. We provide information, education, technical assistance, and peer support.

Founded in 1991, the Rhode Island Parent Information Network is a nonprofit that helps thousands of families and individuals each year in every part of Rhode Island. RIPIN's more than 18 statewide programs and services assist Rhode Islanders in becoming better advocates for themselves and their children in school, in health care and in their communities.

RIPIN also offers a Resource Center staffed by trained Resource Specialists who answer questions about parent involvement, school issues, special education, health care, and community services.

It is RIPIN's mission to help Rhode Islanders through support, advocacy, training, parent involvement, and workshops.

For more information contact:

Family to Family Health Information Center / Family Voices at
Rhode Island Parent Information Network

1210 Pontiac Avenue

Cranston, RI 02920

familyvoices@ripin.org

www.ripin.org

401-270-0101

800-464-3399



This resource guide was created by the Rhode Island Parent Information Network in partnership with the Rhode Island Department of Health. The Health and Resources Administration (HRSA), Maternal Child Health Bureau (MCHB) provides funds for Family Voices Family to Family Health Information Centers.

Copyright © 2011



Table of Contents

1. EARLY CHILDHOOD SUPPORTS	4
Early Intervention	
Early Head Start & Head Start	
Parents as Teachers (PAT)	
Home Instruction Program for Preschool Youngsters (HIPPY)	
Even Start	
Childhood Outreach Screening	
2. EDUCATION RESOURCES	10
RI Department of Education	
Special Education Departments by Town or District	
Private Special Education	
State Operated Schools	
Charter Schools	
3. TRANSITION SUPPORTS IN RHODE ISLAND	15
RI Regional Transitional Centers	
Office of Special Healthcare Needs Adolescent Transition	
Adult Education and GED	
4. HEALTH IN RI	18
Medical Assistance	
RIte Care, RIte Share and Katie Beckett	
Covered Benefits	
5. EARLY & PERIODIC SCREENING, DIAGNOSIS AND TREATMENT	21
Assistive Devices & Nursing Care	
Benefits and Policies	
6. SUPPORTS FOR FAMILIES OF CHILDREN WITH SPECIAL NEEDS	22
Medical Assistance for Children with Special Needs	
Dental Care	
CEDARR Family Centers	
Home Based Therapies	
Supplemental Security Income (SSI)	
7. ASSISTIVE TECHNOLOGY	25
Tech ACCESS of RI	
Adaptive Telephone Equipment	
8. MORE RESOURCES	26
Transportation	
General Health	
Prescriptions	
Specific Disability Information	
Hospitals, Therapy and Mental Health	
Family Resource Counselor Program	
9. ASSISTANCE, INFORMATION AND ADVOCACY	38
Rhode Island Works	
Housing	
RI State Departments & Political Information	
10. FEEDBACK FORM	42

Early Childhood Supports

Birth to age

5

Early Intervention

Early Intervention is a program that promotes the growth and development of infants and toddlers. Children who are under three years of age who have a developmental disability or delay in one or more areas may be eligible. Developmental disabilities or delays can affect a child's speech, physical ability or social skills.

Children referred to Early Intervention receive a comprehensive developmental evaluation to determine if they are eligible for the program.

One of the goals of Early Intervention is to provide support to families to help their children develop to their fullest potential. Services are provided in "natural environments" - places where children usually play or take part in daily activities and routines.

Early Intervention Programs

When contacting any site, please ask for the Intake Coordinator of Early Intervention.

Children's Friend & Service

621 Dexter Street
Central Falls, RI 02863
401-721-9200
www.cfsri.org

Easter Seals, RI

213 Robinson Street
Wakefield, RI 02879
401-284-1000
www.ri.easterseals.com

Family Resources Community Action

245 Main Street
Woonsocket, RI 02895
401-766-0900
www.famresri.org

Family Service of Rhode Island

134 Thurbers Avenue
Providence, RI 02905
401-331-1350
www.familyserviceri.org

Hasbro Children's Hospital

765 Allens Avenue
Providence, RI 02905
401-444-3201
www.lifespan.org

The Homestead Group

One Cumberland Plaza, 3rd Floor
Woonsocket, RI 02895
401-775-1500
www.arcornri.org

James L. Maher Center

120 Hillside Avenue
Newport, RI 02840
401-848-2660
www.mahercenter.org

J. Arthur Trudeau Memorial Center

250 Commonwealth Avenue
Warwick, RI 02886
401-823-1731
www.trudeaucenter.org

J. Arthur Trudeau Memorial Center

25 West Independence Way
Kingston, RI 02881
401-783-6853
www.trudeaucenter.org

Looking Upwards, Inc

2974 E. Main Road
Portsmouth, RI 02871
401-293-5790
www.lookingupwards.org

Meeting Street

1000 Eddy Street
Providence, RI 02905
401-533-9100
Referral line: 401-533-9104
www.meetingstreet.org

The Early Intervention Program is administered by the Rhode Island Department of Human Services.



**RI Department of Human Services
Center for Child and Family Health
600 New London Avenue
Cranston, Rhode Island 02920
Department of Human Services
401-462-5300
www.dhs.ri.gov**

Early Intervention (EI) Rhode Island Parent Information Network (RIPIN) Parent Consultant Program

Every Early Intervention program has at least one Parent Consultant available to help families. Each Parent Consultant has had a personal experience with the Early Intervention program and can provide families with the resources, support, information, and opportunities to connect with other families in the program.

Parent Consultants, from the **Rhode Island Parent Information Network**, work closely with EI staff and provide the "family perspective." Their role becomes especially important to many families as they prepare to transition out of EI. Parent Consultants also survey families about their experience in EI.

The information gathered assists the EI program and the Department of Human Services in identifying opportunities for improvement at the local and state level.

For more information on the Parent Consultant Program, please contact:

**Early Intervention Program Director
Rhode Island Parent Information
Network (RIPIN)**
1210 Pontiac Avenue
Cranston Rhode Island 02920
401-270-0101
800-464-3399 (toll free in RI only)
Fax: 401-270-7049
www.ripin.org

Other Early Intervention Resources - Interagency Coordinating Council (ICC)

The Rhode Island Interagency Coordinating Council (ICC) is an advisory committee whose membership is appointed by the Governor of Rhode Island. The ICC provides a forum of public input from families, service providers and other stakeholders regarding federal and state policies on the Early Intervention program.

**For more information on the ICC,
please contact the RI Parent
Information Network:**
401-270-0101 x123
tobin@ripin.org

Early Intervention Central Directory

The Early Intervention Central Directory is a guide that contains basic information about the Early Intervention Program. This guide also provides information on resources for families in Rhode Island.

This guide is available online at:
www.dhs.ri.gov

Early Childhood Programs

Early Head Start

Early Head Start is a national program that provides comprehensive child development services to families with

children under 3 and to pregnant women. The purpose of Early Head Start is to enhance children's physical, social, emotional, and cognitive development; enable parents to be better caregivers and teachers to their children; and to help parents meet their own goals, including that of economic independence. Please note that Early Head Start is only available in selected sites. Please contact your local Head Start to see what services are available in your area.

Head Start

Head Start is a national program that provides comprehensive child developmental services to preschool children ages 3-5 and social services for their families. Specific services for children in Head Start focus on education, social and emotional development, physical and mental health, and nutrition.

**For more information and eligibility
guidelines, visit www.riheadstart.org**

Local Head Start Programs Comprehensive Community Action Program

848 Atwood Avenue
Cranston, RI 02920
401-943-5160
Cranston

Tri-Town Community Action Agency

1126 Hartford Avenue
Johnston, RI 02919
401-351-2750
Johnston, North Providence, Smithfield, North Smithfield, Scituate, Foster, Gloucester and Burrillville

East Bay Community Action Program

Head Start, Early Head Start & Childcare
654 Green End Avenue
Middletown, RI 02842
401-846-5454
Newport, Middletown, Portsmouth, Tiverton, Jamestown, Little Compton, East Providence and Warren

CDI Head Start, Inc.

99 Berkshire Street
Providence, RI 02908
2nd Floor Administration Office
401-272-1760
Providence, Pawtucket, Central Falls, Lincoln and Cumberland

CHILD Inc.,

160 Draper Avenue
Warwick, RI 02889
401-732-5200
Warwick, West Warwick,
West Greenwich and East Greenwich

Woonsocket Head Start

204 Warwick Street
Woonsocket, RI 02895
401-769-1850 Woonsocket

Children's Friend & Service

621 Dexter Street
Central Falls, RI 02863
401-729-0008
Central Falls and South Providence

South County Community Action Inc.

1935 Kingstown Road
Wakefield, RI 02879
401-789-3016
800-432-2605
Charlestown, Exeter, Richmond, North Kingstown, South Kingstown, Narragansett, Westerly and Hopkinton

The Family Outreach Program of Rhode Island - Rhode Island's Home Visiting Program

The Family Outreach Program helps families with young children. Home visitors are caring professionals who are available to visit with families during the day, in the evening and on the weekend. The Family Outreach Program is a program of the Rhode Island Department of Health funded in partnership with the Rhode Island Department of Human Services.

For more information about the Family Outreach Program, call the HEALTH Information Line at 1-800-942-7434

Parents As Teachers (PAT)

The Rhode Island Parent Information Network (RIPIN) manages this state-wide home visiting program. RIPIN firmly believes that parents are their child's first and best teacher. Through home visits to parents with children from birth to five years of age, families are offered:

- Information on their child's growth and development.
- Access to state and community based resources.
- Opportunities to meet other parents with children of a similar age.
- Annual developmental screenings for their child.

To learn more, contact the Rhode Island Parent Information Network at 401-270-0101 or go to www.ripin.org

Home Instruction Program for Preschool Youngsters (HIPPY)

The Home Instruction Program for Preschool Youngsters (HIPPY) is a statewide visiting program for parents of children from three to five years of age. Offered by the **Rhode Island Parent Information Network**, HIPPY supports the development of school readiness through cognitive skill building, information about the local school district, parent networking opportunities, and by connecting families to community resources.

HIPPY

286 Main Street
Pawtucket, RI 02860
401-729-6381
www.oceanstatehippy.org

Even Start Family Literacy Program

The purpose of this program is to help families become full partners in their children's education. The four components of this program are designed to

provide families with the skills and resources to ensure family self-sufficiency with community involvement and support. The four components of the program are:

- High quality early childhood education for children birth to seven years old
- Adult literacy including Adult Basic Education, General Education Development (GED), English as a Second Language (ESL), and job training
- Parenting education
- Parent involvement

Even Start Programs

Dorcas Place Adult and Family Learning Center - Providence
401-273-8866

Pawtucket COZ - Pawtucket
401-729-6293

Central Falls Even Start - Central Falls
401-727-7700

Woonsocket Even Start - Woonsocket
401-767-4600

Tri Town Community Action - Johnston
401-351-2750

South County Community Action - Wakefield
401-798-3016

Education Exchange Even Start - North Kingstown
401-783-0293

Westerly Even Start - Westerly
401-348-2733

Newport Even Start - Newport
401-845-8579

Child Outreach Screening

Child Outreach Screening is a program overseen by the Rhode Island Department of Education and offered through every local school district. It is available to all children ages 3-5. This developmental screening looks at several areas including speech and language, vision, hearing, and general development.



If areas of concern are identified, a referral will be made to the family's local school departments for an evaluation to determine eligibility for preschool special education services.

Child Outreach Programs by Town

Barrington
P.O. Box 95
283 Country Road
Barrington, RI 02806
401-247-3160 or
401-247-3145 x 351
gravella@bpsmail.org

Bristol/Warren
Oliver School
151 State Street
Bristol, RI 02809
401-253-4000 x5117
cordeirom@bw.k12.ri.us

Burrillville
Northwest Region
23A Theodore Foster Rd.
North Scituate, RI 02857
401-647-7560
mociotola@yahoo.com

Central Falls

Outreach Registration Center
 Ella Risk School
 949 Dexter St.
 Central Falls, RI 02863
 401-727-6181x115
 morelr@cfschools.net

Chariho

455A Switch Road
 Wood River Junction, RI 02894
 401-364-1160 x2037
 aimee.silva@chariho.k12.ri.us

Coventry

1675 Flat River Road
 Coventry, RI 02816
 401-822-9400 x249
 bridgebarbara@coventryschools.net

Cranston

Early Childhood Center
 45 Sprague Avenue
 Cranston, RI 02910
 401-270-8057
 msimpson@cpsed.net

Cumberland

Cumberland Pre-School
 BF Norton School
 364 Broad St.
 Cumberland, RI 02864
 401-723-3250
 Kathy.gibney@cumberlandschools.org

East Greenwich

Southern RI Collaborative
 646 Camp Avenue
 North Kingstown, RI 02852
 401-295-2888 x141
 cogni@sorico.org

East Providence

Special Services Department
 80 Burnside Avenue
 East Providence, RI 02915
 401-433-6216 x6259
 dpatch@epschools.ri.com

Exeter/West Greenwich

Southern RI Collaborative
 646 Camp Avenue
 North Kingstown, RI 02852
 401-295-2888 x141
 cogni@sorico.org

Foster

Northwest Region
 23A Theodore Foster Dr.
 N. Scituate, RI 02857
 401-647-7560
 mociotola@yahoo.com

Glocester

Northwest Region
 23A Theodore Foster Rd.
 North Scituate, RI 02857
 401-647-7560
 mociotola@yahoo.com

Jamestown

76 Melrose Avenue
 Jamestown, RI 02835
 401-423-7020 x121
 gerricabral@cox.net

Johnston

Graniteville EC Center
 6 Collins Avenue
 Johnston, RI 02919
 401-231-8790 x2502
 rid21595@ride.ri.net

Lincoln

1624 Lonsdale Avenue
 Lincoln, RI 02865
 401-334-7524
 mcdonaldk@lincolnps.org

Little Compton

Newport County Regional
 Elmhurst School
 1 Frank Coelho Drive
 Portsmouth, RI 02871
 401-683-3570
 amcandrews@mpsri.net

Middletown

Newport County Regional
 Elmhurst School
 1 Frank Coelho Drive
 Portsmouth, RI 02871
 401-683-3570
 amcandrews@mpsri.net

Narragansett

Southern RI Collaborative
 646 Camp Avenue
 North Kingstown, RI 02852
 401-295-2888 x141
 cogni@sorico.org

New Shoreham

Southern RI Collaborative
 646 Camp Avenue
 North Kingstown, RI 02852
 401-295-2888 x141
 cogni@sorico.org





South Kingstown

Southern RI Collaborative
 646 Camp Avenue
 North Kingstown, RI 02852
 401-295-2888 x141
 cogni@sorico.org

Tiverton

Newport County Regional
 Elmhurst School
 1 Frank Coelho Drive
 Portsmouth, RI 02871
 401-683-3570
 amcandrews@mpsri.net

Warwick

Drum Rock Early Childhood Center
 575 Centerville Rd.
 Warwick, RI 02886
 401-734-3230
 vows@warwickschools.org

West Warwick

10 Harris Avenue
 West Warwick, RI 02893
 401-822-8432 x1348
 dheroux@westwarwickpublicschools.com

Westerly

Bradford School
 15 Church St.
 Westerly, Rhode Island 02808
 401-348-2733
 dnabb@westerly.k12.ri.us

Woonsocket

Second Avenue School
 196 Second Avenue
 Woonsocket, RI 02895
 401-767-4643
 cottagerental@hotmail.com

Newport

437 Broadway
 Newport, RI 02840
 401-847-2100 x221
 nicholecardoza@cox.net

North Kingstown

Fishing Cove School
 110 Wickford Point Road
 North Kingstown, RI 02852
 401-268-6579
 mary_nelson@nksd.net

North Providence

North Providence Special Education
 2240 Mineral Spring Avenue
 North Providence, RI 02911
 (401) 233-1110 x4531
 ldj215@aol.com

North Smithfield

Northwest Region
 23A Theodore Foster Rd.
 North Scituate, RI 02857
 401-647-7560
 mociotola@yahoo.com

Pawtucket

Administration Bldg.
 286 Main Street
 Pawtucket, RI 02860
 401-729-6511
 murraym@psdri.net

Portsmouth

Newport County Regional
 Elmhurst School
 1 Frank Coelho Drive
 Portsmouth, RI 02871
 401-683-3570
 amcandrews@mpsri.net

Providence

Administration Bldg.
 797 Westminster Street
 Providence, RI 02903
 401-278-0517
 mindy.mertz@ppsd.org

Scituate

Northwest Region
 23A Theodore Foster Rd.
 North Scituate, RI 02857
 401-647-7560
 mociotola@yahoo.com

Smithfield

49 Farnum Pike
 Esmond, RI 02917
 401-231-6608
 cpoyton@smithfield_ps.org

RI Department of Education

Coordinator of Early Childhood Initiatives
255 Westminster Street, 4th Floor
Providence, RI 02903
401-222-8941
michele.palermo@ride.ri.gov

RI Department of Education

Early Childhood
Special Education
255 Westminster Street, 4th Floor
Providence, RI 02903
401-222-8947
ann.turrell@ride.ri.gov

Childcare Assistance

For eligibility information or an application for assistance, please contact:

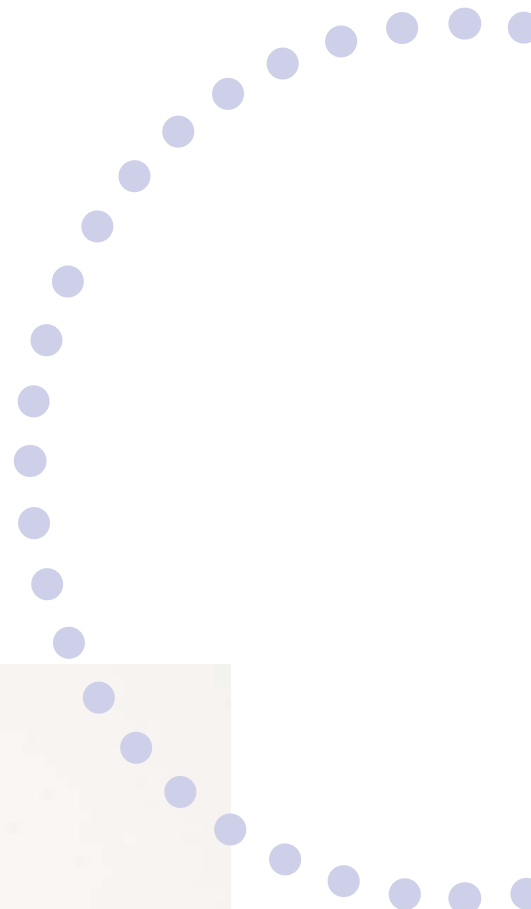
**DHS Info Line at 401-462-5300 & TTY/
Hearing Impaired 401-462-3363
www.dhs.state.gov**

The Department of Human Services can help eligible working families pay for child care. You do not have to participate in the RI Works Program to qualify for child care assistance.

To be eligible to receive child care assistance, families must meet income requirements. The number of hours that a parent works or is participating in a work activity, approved training or education program are also factors.

Depending on a family's income, they may have to pay a co-payment.

For parents that participate in the Rhode Island Works Program, there is no income limit for child care because if a family is eligible for RI Works, they would meet the income requirements for the Child Care Assistance Program.



Education Resources

Age 3 to **21**

RI Department of Education, Office of Student, Community and Academic Supports

Rhode Island has a long and proud history of ensuring that students with special needs receive support and intervention to achieve high expectations and exit public education as productive citizens, life-long learners, and contributing members of the workforce. The Office of Student, Community and Academic Supports is responsible for:

- Children and youth with disabilities who require special education.
- Children and youth who are English language learners or limited English proficient/Non-English speaking.
- Children who participate in early childhood education and/or preschool special education programs.
- Children and youth who are learning beyond grade level.

The goal of the Office of Student, Community and Academic Supports is to ensure that children with diverse learning needs are provided equal access to a public education, and that schools develop effective strategies for meeting the needs of these unique learners.

Rhode Island Department of Education
255 Westminister Street
Providence, RI 02903
401-222-8999
www.ride.ri.gov

The Office of Student, Community and Academic Supports operates a Call Center during regular business hours to assist families and school district personnel with special questions.

Special Education Call Center:
401-222-8999

Special Education Departments by Town or District

Barrington
283 County Road
Barrington, RI 02806
401-247-3145
www.barringtonschools.org

Bristol/Warren
151 State Street
Bristol, RI 02809
Phone: 401-253-4000
www2.bw.k12.ri.us

Burrillville
2300 Bronco Highway
Harrisville, RI 02830
401-568-1307
www.bsd-ri.net

Central Falls
21 Hedley Avenue
Central Falls, RI 02863
401-727-7700
www.cfschools.net

Chariho
Charlestown, Hopkinton, Richmond
455 A Switch Road
Wood River Junction, RI 02894
401-364-1160
www.chariho.k12.ri.us

Coventry
1675 Flat River Rd.
Coventry, RI 02816
401-822-9400
www.coventryschools.net

Cranston
845 Park Avenue
Cranston, RI 02910
401-270-8000
www.cps.k12.ri.us



Cumberland
2602 Mendon Road
Cumberland, RI 02864
401-658-1600
www.cumberlandschools.org

East Greenwich
111 Pierce Street
East Greenwich, RI 02818
401-398-1220
www.egsd.net

East Providence
80 Burnside Avenue
East Providence, RI 02915
401-433-6200
www.ep.k12.ri.us

Exeter West Greenwich
940 Nooseneck Hill RD
West Greenwich, RI 02817
401-397-7420
www.ewg.k12.ri.us

Jamestown

76 Melrose Avenue
 Jamestown, RI 02835
 401-423-7020
www.jamestownri.com

Johnston

10 Memorial Drive
 Johnston, RI 02919
 401-233-1900
www.ri.net/schools/johnston

Lincoln

1624 Lonsdale Avenue
 Lincoln, RI 02865
 401-721-3317
www.lincolnps.org

Narragansett

25 Fifth Avenue
 Narragansett, RI 02882
 401-792-9426
www.narragansett.k12.ri.us

Newport

15 Wickham Road
 Newport, RI 02840
 401-847-2100
www.newporttrischools.org

**Newport County Regional
 Little Compton, Middletown,
 Portsmouth, & Tiverton**

Frank Coehlo Drive
 Portsmouth, RI 02871
 401-683-3570
www.ri.net/nptctyregional

New Shoreham

P.O. Box 1890
 Block Island, RI 02807
 401-466-5600
www.bi.k12.ri.us

North Kingstown

100 Fairway Drive
 North Kingstown, RI 02852
 401-268-6251
www.nksd.net

North Providence

2240 Mineral Spring Avenue
 North Providence, RI 02911
 401-233-1100
www.northprovidenceri.gov

North Smithfield

83 Greene Street
 Slatersville, RI 02876
 401-769-5492
www.northsmithfieldschools.org

Northwest Special Education

Region Foster, Glocester, Scituate
 23A Theodore Foster Drive
 North Scituate, RI 02857
 401-647-4106
www.fg.k12.ri.us

Pawtucket

286 Main Street
 Pawtucket, RI 02860
 401-729-6382
www.psdri.net

Providence

797 Westminster Street
 Providence, RI 02908
 401-456-9263
www.providenceschools.org

Smithfield

49 Farnum Pike
 Smithfield, RI 02917
 401-231-6608
www.smithfield-ps.org

South Kingstown

307 Curtis Corner Road
 Wakefield, RI 02879
 401-360-1300
www.skschools.net

Warwick

1849 Warwick Avenue
 Warwick, RI 02889
 401-734-3050
www.warwickschools.org

Westerly

15 Highland Avenue
 Westerly, RI 02891
 401-315-1500
www.westerly.k12.ri.us

West Warwick

10 Harris Avenue
 West Warwick, RI 02893
 401-822-8432
www.westwarwickpublicschools.com

Woonsocket

108 High Street
 Woonsocket, RI 02895
 Phone: 401-767-4600
www.woonsocketschool.com



Rhode Island Association of Private Special Education Schools (RIAPSES)

RIAPSES is a group of specialized educational programs which work collaboratively with RI public schools. All of the programs are approved by the RI Department of Education.

Action Based Enterprises

115 Ricard Street
Woonsocket, RI 02895
401-767-5959

Bradley School

1011 Veterans Memorial Parkway
East Providence, RI 02915
401-432-1411

Bradley Hospital/Center for Autism & Developmental Disabilities Day Program Day School

1011 Veterans Memorial Parkway
East Providence, RI 02915
401-432-1411

The Bradley School

2820 East Main Road
Portsmouth, RI 02871
401-682-1816

Bradley School South

4781 Tower Hill Road
Wakefield, RI 02879
401-284-1040

Camp E-Hun-Tee

One Camp E-Hun-Tee Place
Exeter, RI 02822
401-539-7775

Center for Individualized Training

15 Bough Street
Providence, RI 02909
401-351-0610

Cornerstone School

665 Dyer Avenue
Cranston, RI 02920
401-942-2388

Eleanor Briggs School

116 Long Street
Warwick, RI 02886

Elmwood Community School

801 Elmwood Avenue
Providence, RI 02907
401-490-4095

Groden Center South

2 St. Vincent Depaul
Coventry, RI 02816
401-615-2600

Harmony Hill School

63 Harmony Hill Road
Chepachet, RI 02814
401-949-0690

High Road School of Providence

Goodwill Industries of RI
100 Houghton Street
Providence, RI 02904
401-751-5800

Hillside Alternative Program

115 Ricard Street
Woonsocket, RI 02895
401-762-0769

Mount Pleasant Academy

1246 Chalkstone Avenue
Providence, RI 02908
401-521-4335

ACE Program School

735 New London Avenue
Cranston, RI 02920
401-946-2020

Ocean Tides, Inc.

635 Ocean Road
Narragansett, RI 02882
401-789-1016

Meeting Street

1000 Eddy Street
Providence, RI 02905
401-533-9100

St. Mary's Home for Children George N. Hunt Campus School

440 Fruit Hill Avenue
North Providence, RI 02911
401-353-3900

Ocean Tides

634 Ocean Road
Narragansett, RI 02882
401-789-1016
www.oceantides.org

Pathways Strategic Teaching Center

3445 Post Road
Warwick, RI 02886
401-739-2700

Perspectives Therapeutic Classroom

166 Mark Drive
Quidnessett Elementary School
North Kingstown, RI 02852
401-294-8181

The Providence Center School

520 Hope Street
Providence, RI 02906
401-276-4531

Sargent Rehabilitation Center

800 Quaker Lane
Warwick, RI 02828
401-886-6653

School One

220 University Avenue
Providence, RI 02906
401-331-2497

The Spurwink School II

365 River Road
Lincoln, RI 02865
401-781-4380

St. Andrews School

63 Federal Road
Barrington, RI 02806
401-246-1230



The Tides School
242 Dexter Street
Pawtucket, RI 02860
401-724-8060

NAFI-Alternatives Program
350 Duncan Drive
Providence, RI 02906
401-453-4740

Tides School
260 Highland Avenue
Providence, RI 02906
401-861-3778

The Tides School
790 Broad Street
Providence, RI 02905
401-401-467-8228

The Tides School
222 Washington Street
West Warwick, RI 02893
401-822-1360

**Tavares Educational Center /
Tavares Pediatric Center**
101 Plain Street
Providence, RI 02903
401-272-7127

Valley Community School
249 Roosevelt Avenue
Pawtucket, RI 02860
401-722-3513

Valley Community School
83 Rolfe Square
Cranston, RI 02910
401-941-9707

Valley Community School
60 Hammarlund Way
Middletown, RI 02842
401-849-6981

Viola M. Berard School
P.O. Box 1700
Woonsocket, RI 02895

The Wolfe School
215 Ferris Avenue
East Providence, RI 02916
401-432-9940

State Operated Schools & Charter Schools

**DCYF
Alternative Education Program**
57 Power Street
Cranston, RI 02920
401-462-7227

**Metropolitan Regional
Career & Technical Center**
325 Public Street
Providence, RI 02905
401-752-2600
www.metcenter.org



**RI Department of Corrections,
Education Unit**
15 Fleming Road
Bernadette Building
Cranston, RI 02920
401-462-2507

Rhode Island School for the Deaf
One Corliss Park
Providence, RI 02908
www.rideaf.net

**Metropolitan Regional
Career & Technical Center**
362 Dexter Street
Peace Street Campus
Providence, RI 02907
401-752-3400
www.metcenter.org

**Metropolitan Regional
Career & Technical Center**
One York Street
Newport, RI 02840
401-849-7711
www.metcenter.org

**Wm. M. Davies Jr.
Career-Technical High School**
50 Jenckes Hill Road
Lincoln, RI 02865
401-728-1500
www.daviestech.org

Beacon Charter School
320 Main Street
Woonsocket, RI 02895
401-671-6261
www.beaconart.org

Blackstone Academy Charter School
334 Pleasant Street
Pawtucket, RI 02860
401-726-1750
www.blackstoneacademy.org

NEL/CPS Construction Career Academy
4 Sharpe Drive
Cranston, RI 02920
401-270-8692
www.charter.cpsed.net

Highlander Charter School
42 Lexington Avenue
Providence, RI 02907
401-277-2600
www.highlandercharter.org

International Charter School
334 Pleasant Street
Pawtucket, RI 02860
401-721-0824

The Learning Community Charter School
21 Lincoln Avenue
Central Falls, RI 02863
401-722-9998
www.thelearningcommunity.com



Textron Chamber of Commerce Academy
 130 Broadway
 Providence, RI 02903
 401-456-1738
www.chamberschool.com

The Compass School
 537 Old North Road
 Kingston, RI 02881
 401-788-8322
www.compassschool.org

The Greene School
 84 John Potter Road
 West Greenwich, RI 02817
 401-397-8600
www.thegreeneschool.org

Rhode Island Technical Assistance Program (RITAP)

RITAP is a statewide resource center for technical assistance and support; professional development and training and policy analysis and interpretation.

The resources of RITAP are organized to assist state and local agencies, institutions of higher learning and families in the delivery of quality education and support services for all children including those with disabilities.

RITAP is a collaborative effort of the Rhode Island Department of Education Office of Student, Community and Academic Supports and Rhode Island College. It provides practitioners, parents and policymakers the knowledge and resources necessary to increase their capacity to provide comprehensive and coordinated services to all children including those with disabilities that result in improved educational performance and enhanced life-long outcomes.

**600 Mt Pleasant Avenue
 Providence, RI 02908
 401-456-4600
www.ritap.org**

RI Parent Information Network (RIPIN)

The Rhode Island Parent Information Network provides information, support and training to help all Rhode Islanders become better advocates for themselves and their children in school, in health care and in their communities.

RIPIN offers a Resource Center staffed by trained Resource Specialists who answer questions about parent involvement, school issues, special education, health care, and social services. It is RIPIN's mission to help Rhode Islanders through support, advocacy, training, parent involvement, and workshops.

RIPIN offers:

- Parent and professional workshops and trainings
- Mentoring
- Parent involvement programs
- Call-in Resource Center for information regarding education, health care and community services in RI

RI Parent Information Network
1210 Pontiac Avenue
Cranston, RI 02920
401-270-0101 800-464-3300
www.ripin.org

Parent Support Network of Rhode Island (PSN)

PSN is an organization of families supporting families with children, youth and young adults who experience or are at risk for serious behavioral, emotional and/or mental health challenges.

PSN seeks to strengthen and preserve families and reduce family isolation by building culturally and linguistically competent systems of care through advocacy, education, training, and increased public awareness.

**1395 Atwood Avenue, Suite 114
 Johnston, Rhode Island 02919
 401-467-6855 800-483-8844
www.psnri.org**



Transition Supports in Rhode Island

Transition to Adult Life

Transition planning is a way for students ages 14 to 21 and their families, school staff and service providers to prepare the student for life after high school. Transition means making a change or going from one place to another. For students with disabilities, transition means going from school to the adult world. It's important to plan early for this transition – beginning in the teen years for a successful and rewarding future.

The guide *Here's to Your Students Future! A Parent's Guide to Transition Planning* was produced by the RIPIN and the RI Department of Education Office for Student, Community & Academic Supports. This guide for parents was created to get you and your student started in the transition planning process.

The Rhode Island Department of Education contracts with RIPIN to support school districts and parent organizations with navigating the transition planning process.

RIPIN can assist with phone support, educational workshops, Annual College Forum for students and parents as well as other regional and statewide parent events.

RI Parent Information Network
401-270-0101 800-464-3399

RI Regional Transition Centers & Vocational Assessment Centers

The Regional Transition Centers (RTC) & Regional Vocational Assessment Centers (RVAC) were developed to support schools, families and communities in preparing students for adult life through professional development; resource materials; programs and services; and informational events.

The Regional Transition Centers work in partnership with the Rhode Island De-

partment of Education (RIDE), the Office of Rehabilitation Services (ORS), RIPIN, and local school districts.

In contacting any one of the Regional Transition Centers, you will find support for your transition-aged student (14 – 21). Whether you're a family member or educator, you can help your student prepare and plan for their future by attending informational workshops, taking part in school sponsored transition events, participating in career assessments, calling to receive one-on-one support, or simply by browsing the resource library at your regional transition center.

For more information contact the center in your region:

Northern RI Collaborative

401-721-0709x103

JSlade@nric-ri.org

Services: Pawtucket, Central Falls, Johnston, Cumberland, Woonsocket, Lincoln, Burrillville, Smithfield, North Smithfield, North Providence

East Bay Educational Collaborative

401-245-2045 x303

aspinwac@ride.ri.net

Services: East Providence, Portsmouth, Warren/Bristol, Little Compton, Barrington, Middletown, Tiverton, Newport

Providence Public Schools

401-278-0520

Nancy.Stevenin@ppsd.org

Services: Providence

West Bay Collaborative

401-941-8353 x124

curranwbc@aol.com

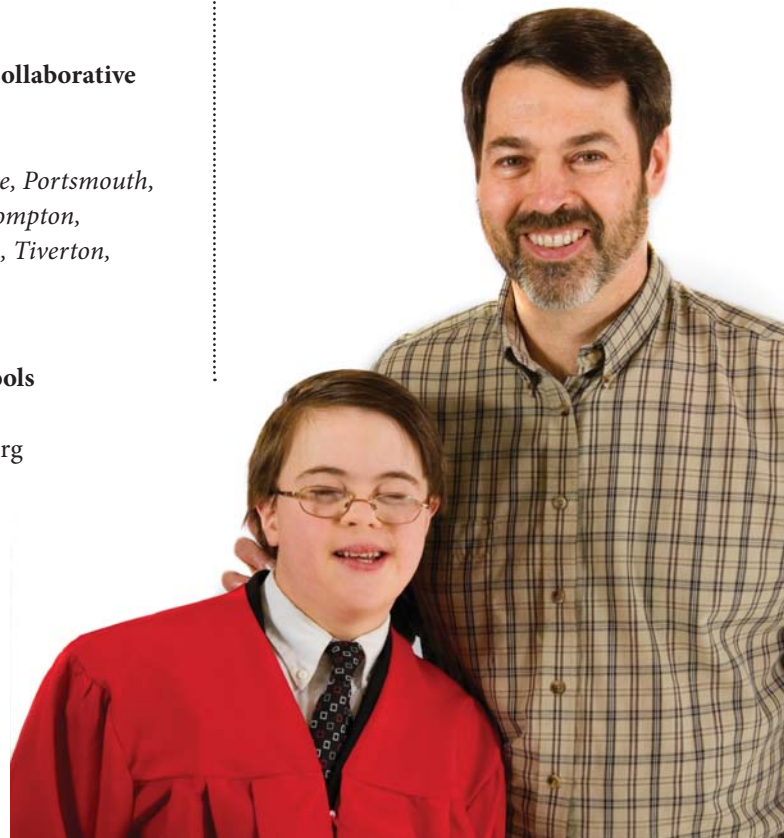
Services: Coventry, Cranston, Foster, Glocester, Foster/Glocester Regional, Scituate, Warwick, West Warwick

Southern RI Collaborative

401-295-2888 x109

jwalejko@sorico.org

Services: North Kingstown, South Kingstown, Narragansett, Westerly, East Greenwich, Exeter/West Greenwich, Chariho, New Shoreham, Jamestown



Transition Resources

Office of Special Healthcare Needs Adolescent Healthcare Transition Program

Adolescent transition is an important topic in Rhode Island. The Rhode Island Department of Health's Office of Special Healthcare Needs is bringing the healthcare piece into focus with unique materials designed for youth, their families, educators, and healthcare providers. For transition resources, visit www.health.ri.gov/familyspecialneeds/transition/index.php

Other transition programs in the state include: RI Department of Education (RIDE), Regional Transition Academies, RI Parent Information Network (RIPIN), RI Department of Human Services (DHS) Office of Rehabilitation Services (ORS), RI Department of Behavioral Healthcare, Developmental Disabilities and Hospitals (BHDDH), and the Sherlock Center on Disabilities.

Paul V. Sherlock Center on Disabilities at Rhode Island College

Sentinel Project - The Sentinel Project strives to bring together individuals with disabilities and their family members to share their experiences with the Sherlock Center and one another. The Sentinel Project is the Consumer Advisory Committee for the Sherlock Center. New members are welcome to join.

Family to Family of RI - The Sherlock Center collaborates on this project with **Family Voices and the Rhode Island Parent Information Network**. Family to Family of RI is a network created by families for families of children and adults with special needs. The network offers opportunities for families to connect with one another, share experiences, information, and support.
www.rifamilytofamily.net

Inclusion Institutes - Inclusion Institutes provide the opportunity for school personnel and parents to work in teams in

planning for inclusion of individual children who have developmental disabilities. These one-day institutes address barriers to meaningful inclusion. Teams usually consist of the child's parents, a special educator, teaching assistants, therapists, and others. For more information, call 401-456-8072.

Community Supports Navigator Project

A Community Supports Navigator provides young people with intellectual and developmental disabilities and their families the guidance needed to plan for meaningful adult lives in their communities after graduation from high school. Community Supports Navigators are trained in the values of self-determination, person-centered planning facilitation and the processes for accessing natural, community and formal supports including the management of self-directed supports for people with disabilities in Rhode Island.

360 Local Supportive Parenting Project

This initiative provides a variety of support services to parents self-identified as having learning difficulties and/or cognitive challenges.

RI Services to Children and Youth with Dual Sensory Impairments (DSI)

The DSI Project provides family and professional support, coordination of services, information, technical assistance, and training to children with dual sensory impairments, from birth through 22 years of age. Call 401-456-8557.

Educational Advocate Program - This program is responsible for making educational decisions for children with disabilities who are in the care of the state, and whose parents are unable to act on their behalf. For more information, contact 401-456-1943.

RI Vision Education and Services Program (RIVESP) - RIVESP, supported by the Rhode Island Department of Education, provides teaching and consultation services for children who are blind or visually impaired, their families and educational staff within the school environment. The array of services available includes early intervention, orientation and mobility, and the instruction of specific compensatory skills for children from birth through 21 years.

The Sherlock Center offers a variety of workshops such as positive behavioral supports, employment of persons with disabilities, transition, assistive technology, and inclusion. The Sherlock Center also has a lending resource library with over 1500 books, periodicals, software, and dvds/videotapes.

**Paul V. Sherlock Center on Disabilities
at Rhode Island College**
600 Mount Pleasant Avenue
Providence RI 02908
401-456-8072



Parents and Friends for Alternate Living (PAL)

PAL is a family organization that believes in meeting people where they are and providing them with opportunities to make informed choices based on best practices regarding individuals with disabilities. They assist families and individuals in identifying their own personal communication styles and then helping them build bridges in their communities to the supports and services they need.

Parents and Friends for Alternate Living (PAL)

96 Rolfe Street
Cranston, RI 02920
401-785-2100
www.pal-ri.org

Adult Education and GED

For information regarding the High School Equivalency Test, please contact:

Rhode Island Department of Education
255 Westminister Street
Providence, RI 02903
401-222-8999
www.ride.ri.gov

Developmental Disabilities

The Division of Developmental Disabilities

The Division is responsible for planning, providing and administering a community system of services/supports for adults with developmental disabilities in Rhode Island by enhancing the quality of support/services so that people with disabilities can identify and move toward personal futures of inclusion and participation in community life; safeguarding the health and safety of people with disabilities through quality management activities that promote human rights and protect people from abuse; and ensuring equitable access to and allocation of available resources in order to be responsive to the individual needs of the person.

Behavioral Healthcare, Developmental Disabilities and Hospitals
14 Harrington Road
Cranston, RI 02920
401-462-3207
www.bhddh.ri.gov

Rhode Island ARCs

Cranston Arc, Inc.
111 Comstock Parkway
Cranston, RI 02921
401-941-1112
www.cranstonarc.org

Westerly-Chariho Chapter Frank A. Olean Center
93 Airport Road
Westerly, RI 02891
401-596-2091
www.oleancenter.org

The Arc of Blackstone Valley
115 Manton Street
Pawtucket, RI 02861
401-727-0150
www.bvcriarc.org

Greater Providence Arc
220 Woonasquatucket Avenue
North Providence, RI 02911
401-353-7000
www.fogartycenter.org

Rhode Island Developmental Disabilities Council

Promoting the ideas that will enhance the lives of people with developmental disabilities is one of the Council's missions. Under federal enabling legislation the Council must stay abreast of and share information about new programs and services as well as important issues, trends and ideas that are of concern to people with developmental disabilities, families, service agencies, business, and community leaders, legislators and policy makers. The Council web site connects people with the information they need to make positive changes in their lives or to develop a frame of reference for decision making.

The RI Developmental Disabilities

Council
400 Bald Hill Road Suite 515
Warwick, RI 02886
Voice/TDD: 401-737-1238
www.riddc.org

National Association of Developmental Disabilities Councils (NADDC)

The National Association of Councils on Developmental Disabilities (NACDD) is a national membership organization representing the 55 State and Territorial Councils on Developmental Disabilities. NACDD is a 501(c) 3 organization with the purpose of promoting and enhancing the outcomes of member councils in developing and sustaining inclusive communities and self directed services and supports for individuals with developmental disabilities.

National Association of Developmental Disabilities Councils (NADDC)
1660 L Street, NW, Suite 700
Washington, DC 20036
202-506-5813
www.nacdd.org

Rhode Island Assistive Technology Access Partnership Office of Rehabilitation Services
40 Fountain Street
Providence, RI 02903
401-421-7005
800-916-8324 or 401-463-0202
Spanish: 401-272-8090
Cambodian: 401-272-7990
TTY: 401-421-7016
www.atap.ri.gov

Health in

RI



The following is a listing of systems that encompass health related services and issues. Please remember that this is a guide, and that all services may not be available to all families. Call the specific agency or group for detailed information.

Rhode Island Medical Assistance Program

RI Medical Assistance

The Rhode Island Medical Assistance Program, also known as “Medicaid” is a federal and state-funded program that pays for medical and health related services for eligible Rhode Islanders.

Who is Eligible for Medical Assistance?

Children, parents, and pregnant women (through RItE Care); RI working families (through RIshare Premium Assistance Program); Children with special needs (through Katie Beckett Medical Assistance). Members enroll in a participating health plan: **United Healthcare of New England or Neighborhood Health Plan of RI**

RItE Care Program

RItE Care is Rhode Island’s Medicaid managed care program for families on the RI Works Program and eligible uninsured pregnant women, children, and parents. It provides comprehensive health care coverage through enrollment in participating health plans. Children with special health care needs may qualify for Medical Assistance due to their disability or condition.

RItE Share Program

RI’s Premium Assistance Program that provides health coverage through an employer’s health insurance. The State will pay all or part of an eligible employee’s cost.

Eligibility

Eligibility is based on income and family size.

- Pregnant women (family’s income less than 250 percent of the Federal Poverty Level- FPL)
- Children up to age 19 (family’s income less than 250 percent of the FPL)
- Parents with children under age 18 (family’s income less than 175 percent of the FPL)

Cost

Members whose family’s income is less than 150 percent of the FPL do not pay a monthly premium. Members whose family’s income is more than 150 percent of the FPL pay a monthly premium of either \$61, \$77 or \$92 per month

How to Apply

Complete an application and send it by mail to the local DHS office that serves your town or city. Please include the necessary copies of documents that are requested. If you need help completing the application, please visit a Family Resource Counselor near you or call the **DHS Info Line**.

For More Information

- **DHS Info Line**
401-462-5300
- **United Healthcare of New England**
800-587-5187
www.uhcmedicaid.com
- **Neighborhood Health Plan of RI**
800-459-6019
www.nhpri.org

Katie Beckett

Katie Beckett is an eligibility category that allows certain children under age 19 who have long term disabilities or complex medical needs to become eligible for Medical Assistance coverage. Katie Beckett eligibility enables children to be cared for at home instead of in an institution. With Katie Beckett, only the child’s income and resources, not the parents’, are used to determine eligibility.

Who is Eligible?

To be eligible for Medical Assistance coverage through Katie Beckett, a child must:

- Be under age 19.
- Be a Rhode Island resident and U.S. citizen or eligible non-citizen.
- Meet the income and resource requirements.
- Meet the Social Security Administration’s definition of disability.
- Live at home.
- Require a level of care at home that is typically provided in a hospital, nursing facility or an Intermediate Care Facility for Persons with Mental Retardation (ICF-MR).

How much does it cost?

There is no cost to families.

How to Apply

A Katie Beckett social caseworker usually talks to families prior to submitting the application, so that families understand the eligibility criteria and application process. You can call or download an application from the DHS website.

www.dhs.ri.gov/childrenwithspecialneeds/katiebeckett

For help with the application process
(**Social Caseworker**) - 401-462-0760

For clinical questions (**Public Health Nurse**) 401-462-6364

**RI Department of Human Services
Center for Child and Family Health/
Katie Beckett
600 New London Avenue
Cranston, Rhode Island 02920
Fax: 401-462-6353**

Rhode Island Medicaid Covered Benefits

•**Inpatient Hospital Care:** up to 365 days per year based on medical necessity.

•**Outpatient Hospital Services:** covered as needed, based on medical necessity. Includes physical therapy, occupational therapy, respiratory therapy, and other Medicaid covered services delivered in an outpatient hospital setting (Health Plans have the option to deliver these types of services in other appropriate settings.).

•**Physician Services:** covered as needed, based on medical necessity; up to three GYN visits annually to a network provider is covered without a PCP referral.
Family Planning Services: non-extended family planning group receives same family planning benefit as extended family planning group.

•**Prescription Drugs:** covered when prescribed by a Health Plan physician/provider (or other physician for Seriously Emotionally Disturbed (SED) and

Seriously and Persistently Mentally Ill (SPMI) populations. Generic substitution required unless specified otherwise by physician.

•**Non-Prescription Drugs:** covered when prescribed by a Health Plan physician/provider; limited to non-prescription drugs covered by the Rhode Island Medical Assistance Program.

•**Laboratory Services:** covered when ordered by a Health Plan physician/provider (or other physician for SED and SPMI), including urine screens.

•**Radiology Services:** covered when ordered by a Health Plan physician/provider.

•**Diagnostic Services:** covered when ordered by a Health Plan physician/provider (or other physician for SED and SPMI).

•**Mental Health and Substance Abuse Services Outpatient:** Both short and long term treatment covered as needed based on medical necessity, subject to stop-loss

limitations and groups/services out-of-plan. Includes methadone maintenance, outpatient methadone detoxification, collateral visits.

•**Mental Health and Substance Abuse Services-Inpatient** Both short and long term treatment: covered as needed, based on medical necessity. (Butler Hospital may be used for services). Includes day treatment, partial hospitalization, and residential treatment, except for residential treatment for children ordered by DCYF, and except for residential substance abuse treatment for children age 13 to 17. Covered residential treatment includes therapeutic services, but does not include room and board, except in a facility accredited by the Joint Commission on Accreditation of Healthcare Organizations (JCAHO). Covered services subject to limitations

•**Early and Periodic Screening Diagnosis and Treatment (EPSDT) Services:** provided to all children and young adults up to age 21, who are eligible for Medicaid. Includes tracking, follow-up and outreach to children for initial visits, preventive vis-



its, and follow-up visits. Includes interperiodic screens as medically indicated. Includes multi-disciplinary evaluation and treatment for children with significant developmental disabilities or developmental delays. (see page 22 for details)

- Home Health Services: covered if ordered by a Health Plan physician. Includes private duty nursing and homemaking/personal care services when medically necessary. Personal care/ homemaking services include such tasks as assisting the client with personal hygiene, dressing, feeding, transfer, ambulatory needs, and household tasks incidental to the client's health needs. These homemaking tasks might include making the client's bed, cleaning the client's living areas such as bedroom and bathroom, and doing the client's laundry and shopping. These services may be provided for RIte Care members and their children if the member is unable, because of illness or disability, to provide caretaking functions for herself/himself and her/his child(ren). Does not include respite care, relief care, or day care.

- School-Based Clinic Services: covered as medically necessary at four designated sites.

- Emergency Room Services and Emergency Transportation Services: covered, for emergency services or when authorized by a Health Plan Provider, or in order to assess whether a condition warrants treatment as an emergency service.

- Nursing Facility Care: covered when ordered by a Health Plan physician, subject to stop-loss provisions.

- Services of Other Practitioners: covered if referred by a Health Plan physician.

- Podiatry Services: covered as ordered by Health Plan physician.



- Optometry Services: for adults 21 and older, benefit is limited to examinations that include refractions and provision of eyeglasses if needed once every two years, and other medically necessary treatment visits for illness or injury to the eye. For children under 21, covered as medically necessary with no other limits.

- Hospice Services: up to 210 days lifetime maximum as ordered by a Health Plan physician. Services limited to those covered by Medicare.

- Durable Medical Equipment: covered as ordered by a Health Plan physician. Includes surgical appliances, prosthetic devices, orthotic devices, and medical supplies. Includes hearing aids and molded shoes.

- Early Intervention: covered as included within the IFSP, subject to stop-loss limitations up to the first \$3000 for speech, language, hearing, physical, and occupational therapies.

- Nutrition Services: covered as delivered by a licensed dietitian for certain medical conditions and as referred by a Health Plan physician.

- Group Education/Programs: including childbirth education classes, parenting classes and smoking cessation programs and services.

- Transportation Services: covered non-emergency transportation services include bus passes, and also includes para-transit services, when authorized/arranged by the Health Plan through Rhode Island Public Transportation Authority (RIPTA) Coordinator.

- Interpreter Services: covered if a Health Plan has more than 100 members or 10 percent of its RIte Care membership, whichever is less, who speak a single language other than English as a primary language.

- Transplant Services: covered when ordered by a Health Plan physician subject to stop-loss limitations.



Early & Periodic screening, diagnosis & treatment

(EPSDT)

Early and Periodic Screening, Diagnosis and Treatment (EPSDT) Benefits

Title XIX of the Social Security Act provides for the Early and Periodic Screening, Diagnosis, and Treatment (EPSDT) of eligible Medical Assistance recipients under age 21 to ascertain physical and mental defects, and requires treatment to correct or ameliorate defects and medical conditions found. The Omnibus Budget Reconciliation Act of 1990 (OBRA '90) further mandates that, under EPSDT, services will be provided for such other medically necessary health care, diagnostic services, treatment and other measures described in section 1905(a) of the Social Security Act to correct or ameliorate defects, physical and mental illnesses, and medical conditions discovered by the screening services, whether or not such services are normally covered under the Medical Assistance Scope of Services. Eligible individuals under age 21 receive Medical Assistance services consistent with EPSDT requirements.

Prior authorization is required for all EPSDT services that are not in the normal scope of covered services

EPSDT Policy

Minor Assistive Devices

The Medical Assistance Program has provision to pay for certain minor assistive devices through the Early and Periodic Screening, Diagnosis and Treatment (EPSDT) Benefits for individuals who meet the following criteria:

1. Must not have attained their 21st birthday.
2. Not currently on a Medicaid waiver program which provides coverage for the requested minor assistive device(s).
3. The need for the device(s) is due to a documented medical need.

Procedures for Requesting Minor Assistive Services through EPSDT Services:

1. Physician certifies, in a letter, the medical need for the requested device(s). Physician's letter must identify the medical problem and why the device(s) is necessary. Physician's letter is sent to the DME provider who will be supplying the requested service.
2. Provider of service completes the appropriate Prior Authorization form, attaches the above letter from the physician and submits to EDS in the normal manner.
3. EDS enters the PA into the system and forwards the request to DHS for approval.
4. DHS reviews the PA and makes the determination to either approve or disapprove the PA request, then forwards the response to EDS which then notifies the provider and/or recipient.

Limitations and Exclusions:

Minor Assistive Devices under EPSDT do not include:

1. Devices or equipment permanently attached to a structure.
2. Ramps of any kind.
3. Lifts such as Van Lifts, chair lifts, or stair lifts.
4. Air conditioners.
5. Swimming pools or any type of whirlpool.

Skilled Nursing Care and Home Health Aide Through EPSDT Benefit

Nursing Agency - a provider type that meets the RI Department of Health definition of a certified home health agency or nursing agency and is licensed as such.

Nursing care plan - a plan for nursing intervention designed to meet the needs of the recipient which includes measurable goals and objectives.

Primary care giver - the individual, who is primarily responsible for providing care to the recipient, including specialized technical care.



Skilled nursing services - the planning, provision and evaluation of goal-oriented nursing care that requires specialized knowledge and skills and utilizes the nursing process as problem solving approach. This approach includes 5 components:

1. Assessment
2. Problem identification (Nursing diagnosis)
3. Planning
4. Implementation (Nursing intervention)
5. Evaluation

Pediatric private duty nursing - continuous, specialized skilled nursing services, provided by a licensed registered nurse or licensed practical nurse, the administration of which requires a visit of more than two hours. The nurse should have as a minimum, one year of nursing experience in the Pediatric Intensive Care Unit (PICU) or Neonatal Intensive Care Unit (NICU).

Supports for families of children with special needs

RI Medical Assistance Program for Children with Special Health Care Needs

The RI Medical Assistance Program pays for medical and health related services for Children with Special Health Care Needs who qualify.

Eligibility

Children with a disability or chronic condition are automatically eligible for the Medical Assistance if they are determined eligible for: Supplemental Security Income (SSI), Katie Beckett or Adoption Subsidy through the Department of Children, Youth, and Families (DCYF).

Enrollment

When eligible for Medical Assistance, parents or guardians are then given a choice of enrollment in one of two participating health plans. Children who live in a institutional facility are excluded from health plan enrollment. In those situations, children will be enrolled in traditional Medical Assistance Fee-For-Service.

Enrollment in a Health Plan

Children who are eligible for Medical Assistance enroll in a participating health plan. Participating health plans include: Neighborhood Health Plan of RI and United Healthcare of New England.

Both health plans offer large networks of providers and covered benefits and services. They also offer a special Care Management Program to assist with care coordination or for help arranging transportation or other services.

Enrollment in Medical Assistance Fee-for-Service

Children who do not qualify for enrollment in a health plan will receive traditional Medical Assistance Fee-for-Service.

For More Information

Out-of-Plan Benefits available for children in a health plan or in Medical Assistance Fee-For-Service:

Neighborhood Health Plan of Rhode Island 800-459-6019 www.nhpri.org

United Healthcare of New England 401-732-7119 www.uhcmedicaid.com

Dental Care

Children who are eligible for Medical Assistance receive dental care through either RIte Smiles or Medical Assistance. Which program they are eligible for depends on the age of the child.

RIte Smiles

RIte Smiles is a dental plan for children who are eligible for RI Medical Assistance (including RIte Care, RIte Share and Medical Assistance fee-for-service). Children are eligible if they are born after May 1, 2000.

Find a RIte Smiles Dentist

To find a dentist who participates with the RIte Smiles Program, visit www.dhs.ri.gov/familieswithchildren/dentalcare/RIteSmiles/tabid612/default.aspx.

Medical Assistance Dental Services

For children who are eligible for RI Medical Assistance (including RIte Care, RIte Share and Medical Assistance fee-for-service).



**For more information contact:
DHS Info Line 401-462-5300**

Durable Medical Equipment (DME)

DME is a benefit in the Medical Assistance Program available for children from birth to 21 years of age if medically necessary. DME is equipment or devices used for medical/rehabilitative purposes in the home or community. Prior authorization is required.

How to Apply for Services

For children on Medical Assistance, families can call a durable medical equipment vendor who participates in the RI Medical Assistance Program. The vendor will evaluate the child's need and coordinate getting the necessary documentation to the Department of Human Services for review and approval.

CEDARR Family Centers

A CEDARR Family Center is a place where families get help and support for children with special needs. With CEDARR Family Centers, a family can:

- Learn more about their child's disability or condition.
- Learn how to address their child's needs now and in the future.
- Find resources in the community.
- Get information on a range of services and treatment options.
- Connect with other families who have had similar experiences.

Eligibility

To be eligible for CEDARR Family Center services, a child must be eligible for Medical Assistance, under age 21, a Rhode Island resident, live at home and have a disabling or chronic condition that is cognitive, physical, developmental, and/or psychiatric.

CEDARR Direct Services

In addition to the services listed above, the following may be available for children.

- Home Based Therapeutic Services (HBTS)
- Kids Connect (Daycare)
- Personal Assistance Services and Supports (PASS)
- Respite Program for Children

Eligibility

A child must meet the following requirements to be eligible for Home Based Therapeutic Services. He or she must be – Eligible for Medical Assistance under age 21, a Rhode Island resident, live at home, and have a disabling or chronic condition (cognitive, physical, developmental, and/or psychiatric) that is moderate to severe.

What is the cost of CEDARR services?

There is no cost to families. Children must be eligible for Medicaid.

How To Apply

Please contact a CEDARR Family Center.

CEDARR Family Centers

Please call a CEDARR Family Center near you. CEDARR Family Center services are available statewide:

About Families

203 Concord Street
Suite 225
Pawtucket, RI 02860
401-365-6855 or 1-877-365-6024
and
1 Cumberland Street, 4th Floor
Woonsocket, RI 02895
401-671-6533 or 401-365-6855
www.aboutfamilies.org

Empowered Families

82 Pond Street
Pawtucket, RI 02860
401-365-6103 or 1-888-881-6380
www.empoweredfamilies.org



Families First

765 Allens Ave., 1st floor,
Providence, RI 02905
401-444-7703

Solutions CEDARR

134 Thurbers Avenue
Providence, RI 02905
(401) 461-4351 or 1-800-640-7283
www.solutionscedarr.org

Home-Based Therapeutic Services Program (HBTS)

Home Based Therapeutic Services (HBTS) are specialized, intensive services and treatment that are provided according to an approved individualized treatment plan. Services are provided in the child's home or other age-appropriate community setting. Ongoing parent participation is required to maximize what is learned during treatment. HBTS services are offered to enable a child to participate in his or her family and community more by helping to improve communication, behavioral, psychosocial, and developmental skills.

Personal Assistance Services and Supports (PASS)

Personal Assistance Services and Supports (PASS) can help families of children with special health care needs with daily life skills. PASS can help improve a child's ability to accomplish activities of daily life, improve safety skills and participate in social situations. Services are provided in the home or community setting by a direct support worker. Families have a choice in who is hired to work with their child and how services are delivered. Parents/guardians can find their own direct support worker with assistance from a certified PASS agency or can use a free online resource www.rewardingwork.org. Families are responsible for the training and supervision of their direct support worker.



Respite Program for Children

The Respite Program for Children allows parents or guardians caring for a child with disabilities to have time off for themselves. To be eligible for respite care, a child must need an institutional level of care. This is the type of care typically provided in a hospital, nursing home or Intermediate Care Facility for the Mentally Retarded (ICF/MR). Other factors used in determining eligibility include, but are not limited to: the severity of the child's condition, the intensity of services required, the child's functional daily living skills, safety and safety awareness, and the needs of the family.

Parents/ guardians will be required to find their own respite worker, but assistance is available from certified respite agencies. In addition, there is a free online resource that can help families find appropriate respite workers.

www.rewardingwork.org.

Certified Respite Agencies:

- Cranston ARC
- The Groden Center
- The Homestead Group
- J. Arthur Trudeau Memorial Center
- Ocean State Community Resources, Inc.



For More Information

DHS Medical Care Specialist
401-462-0210 or contact a CEDARR
Family Center.

Supplemental Security Income (SSI)

In addition to Rite Care, the Medical Assistance Program also covers children with special needs. If a child is found eligible for Supplemental Security Income (SSI) due to a disability, then they are also eligible for Medical Assistance. SSI is a Federal program which provides monthly cash payments to families who have children with physical, developmental, and/or mental impairments.

This is a federal program that provides monthly cash benefits to individuals, including children with a physical, developmental and/or mental impairment that results in marked and severe functional limitations.

How to Apply for Services

Call or visit the local Social Security Office. Information is available by phone in both English and Spanish:

Social Security Offices:

380 Westminster Street, 3rd floor
Providence, RI 02903
401-528-4535 or 800-772-1213
TTY: 401-273-6648
www.socialsecurity.gov

130 Bellevue Avenue, Room 210
Newport, RI 02840

4 Pleasant Street
Pawtucket, RI 02860

Pavilion Plaza
2168 Diamond Hill Rd.
Woonsocket, RI 02895

30 Quaker Lane
1st Floor
Warwick, RI 02886



Tech ACCESS Center of Rhode Island

Tech ACCESS of RI is a private, not for profit resource center that serves people with disabilities who are interested in assistive technology. Assistive Technology is any device that helps a person with a disability function better at home, work, school, or in the community. Information and referral services regarding assistive technology products, funding, and services are provided at no charge. Tech ACCESS also provides referrals to service providers, vendors, protection, and advocacy services.

Assistive Technology

Tech Access Center of RI
110 Jefferson Boulevard, Suite 1
Warwick, RI 02888-3854
401-463-0202 (v/tdd)
401-463-3433

The Rhode Island Assistive Technology Access Partnership (ATAP)

The Rhode Island Assistive Technology Access Partnership (ATAP) is designed as a statewide partnership of organizations, each with a targeted assistive technology focus, working together to improve access to and acquisition of assistive technology for individuals with disabilities.

ATAP's main initiatives include device demonstration, device loan, device re-use, training, public awareness, collaboration, information, and referral.

ATAP Partners include Adaptive Telephone Equipment Loan Program (ATEL), East Bay Educational Collaborative (EBEC), Ocean State Center for Independent Living (OSCIL), PARI Independent Living Center, and TechACCESS of RI.

Rhode Island Assistive Technology Access Partnership
Office of Rehabilitation Services
40 Fountain Street
Providence, RI 02903
401-421-7005 (V)
401-421-7016(TDD)
Fax: 401-222-3574
rgreene@ors.ri.gov
www.atap.state.ri.us
Spanish: 401-272-8090
ATAP Information & Referral
800-916-8324

Adaptive Telephone Equipment Loan Program

The Rhode Island Telephone Equipment Loan Program (ATEL) provides demonstrations, training and long term loan and device reutilization services of specialized telephone equipment to qualified individuals who are deaf, hard of hearing, have a speech impairment, or who suffer from neuromuscular damage or disease, that hinders them from using a standard telephone.

Adaptive Telephone Loan Equipment Program (ATEL)

Office of Rehabilitation Services

40 Fountain Street
Providence, RI 02903!

Contact: Denise Corson
401-421-7005 x 357 (V)
401-222-1679 (TTY)

Eligibility Guidelines

To receive equipment, the person must:

- Be a resident of Rhode Island.
- Have a speech, hearing or neuromuscular disability.
- Have a single party telephone line.
- Meet the following income criteria based upon 250% of the United States Department of Health & Human Services Annual Poverty Guidelines (guideline x 250% or 2.5).
- Receive one or more of the following: food stamps, Medicaid, SSI, heating assistance, RIteCare, RIWorks, general public assistance, Rhode Island Pharmaceutical Assistance to the Elderly (RIPAE), or telephone lifeline service.

or

- Household combined annual income is below the 250% poverty line.



A Certificate of Disability must be completed by one of the following:

- Doctor
- Qualified staff member of the Office of Rehabilitation Services
- Audiologist
- Speech Pathologist
- Qualified staff member of the RI School for the Deaf (if applicant attends school now or in the past)

NOTE: The application cannot be processed until both the Application and the Certificate of Disability are received. For more assistance, call 401-421-7005 x357.

Adaptive Environments Center, Inc.

180-200 Portland Street, Suite 1
Boston, MA 02114

617-695-1225

Fax: 617-482-8099

www.adaptiveenvironments.org

More Resources

Education Resources:

United States Department of Education
www.ed.gov

Parent Teacher Association (PTA)

RIC Campus-Building #6
600 Mt. Pleasant Avenue
Providence, RI 02908
401-272-6405
www.rhodeislandpta.org

Transportation Resources

RIDE - RIPTA Para Transit Service
Americans with Disabilities Act (ADA) Transit Program has copies of RIPTA's current program for people with disabilities available in large print, Braille or on audiotape. RIPTA also offers **Flex Service**, which is service for suburban and rural areas that have little or no fixed route service. You must call 48 hours in advance.

RIDE - RIPTA Para Transit Service

265 Melrose Street
Providence, RI 02907
401-781-9400
TDD: 401-781-9524
www.ripta.com

General Health Resources

This section contains resources available to everyone via the Internet or phone. Many of these are nationwide agencies.

Call 211 or go to www.211ri.org

Home and Community Care Programs at the Department of Elderly Affairs

401-462-0570

The Point (Information and Referral)

401-462-4444

Veterans Centers

Veterans Centers are community-based centers located in all 50 states. Veterans Centers provide readjustment counseling

and outreach services to all veterans who served in any combat zone. Bereavement counseling and counseling for military related sexual abuse or harassment is also available. Family members and/or significant others can be seen at Veterans Centers for military related issues. There is no cost to the veteran or family for these services.

RI / Providence VA Medical Center

830 Chalkstone Avenue
Providence, RI 02908-4799
401-273-7100 or 866-590-2976
Fax: 401-457-3370

Warwick Veterans Center

2038 Warwick Avenue
Warwick, RI 02889
401-739-0167

New Bedford Veterans Center

468 North Street
New Bedford, MA 02740
508-999-6920

Hyannis Veterans Center

474 West Main Center
Hyannis, MA 02601
Contact: Bonnie S. McIntosh, MSW
508-778-0124

Operation Stand Down RI

A non-profit organization that helps homeless and disabled veterans with social services, counseling and emergency and permanent housing.

100 Hartford Avenue
Johnston, RI
800-861-VETS
www.osdri.com

Veterans Employment and Training Services 401-528-5134

National U.S. Department of Veterans Affairs

Federal Benefits for Veterans and Dependents

U.S. Department of Veterans Affairs

VA Benefits Information

1-800-827-1000

VA Health Benefits Hotline

1-877-222-8387

Veterans Disability Benefits Commission
Traumatic Brain Injury (TBI) Helpline

1-888-VET-1TBI

Health Agencies

American Academy of Pediatrics, RI Chapter

www.riaap.org

Joint Commission on Accreditation of Health Care Organizations (JCAHO)

www.jointcommission.org

Centers for Disease Control

www.cdc.gov

Lifespan

www.lifespan.org

Centers for Disease Control

www.cdc.gov

Dr. Koop's Community MedSeek

www.healthcentral.com

Medseek

www.medseek.com

Healthatoz - (Search engine for health and medicine)

www.myoptumhealth.com

National Institutes of Health (NIH)

www.health.nih.gov



Healthfinder

A gateway for consumer health information. Regulations and insurance website from the US government Regulation Division
www.healthfinder.org

Office of the Health Insurance Commissioner RI Department of Business Regulation

1511 Pontiac Avenue
Cranston, RI 02920
www.dbr.state.ri.us
401-462-9500
401-462-9532

Sexual Health Network

www.sexualhealth.com

Prescription Drugs

Medicare Part D

For information on Medicare Part D, selecting a Prescription Drug Plan that meets your needs, please visit:

Department of Elderly Affairs

www.dea.ri.gov
401-462-3000

The Point

401-462-4444

RIPAE

Rhode Island Pharmaceutical Assistance for the Elderly

for information please check RIPAE on the Department of Elderly Affairs website.

Call 211 or go to www.211ri.org

Prescription Medication Information

CenterWatch - Directory of Prescription Drug Clinical trials listing service
Patient Assistance Programs
www.CenterWatch.com
www.phrma.org/patients

Pain.com

Information on pain management
www.pain.com

Affording Care: Free Medications

www.thebody.com/afford/free.html

Rxlist

www.rxlist.com

The Medicine Program

www.medicinoprogram.com

Needy Meds

Pharmaceutical manufacturers' drugs
www.needy meds.com

RxAssist

Obtain comprehensive information on Pharmaceutical manufacturer's drug
www.rxassist.org

Specific Disorders and Disabilities

In this section, you'll find many resources that are available to families about genetic disorders, birth defects and disabilities. The Internet is a great tool to search for information. If you don't have a computer, all of the libraries in Rhode Island have computers for public use.

Allergies and Asthma

Asthma and Allergy Foundation of America

8201 Corporate Drive
Suite 1000
Landover, MD 20785
1-800-727-8462
infor@aaafa.org
www.aaafa.org

Draw A Breath Program

Hasbro Children's Hospital
Annex Building Room # 320
593 Eddy Street
Providence, RI 02903
401-444-8340
www.drawabreath.com

Amputee

Amputee Peer Support Group

Oscil's Amputee Group
59 West Shore Road
Warwick, RI 02889
401-738-1013

Attention Deficit/Hyperactivity Disorder

Children and Adults with Attention - Deficit/Hyperactivity Disorder (CHADD)

CHADD National Office:

8181 Professional Place, Suite 150
Landover, MD 20785
301-306-7070 or 800-233-4050
www.chadd.org
Conference@chadd.org
Parent2Parent@chadd.org



National Attention Deficit Disorder Association (ADDA)

info@add.org
www.add.org
PO Box 7557
Wilmington, DE 19803
800-939-1019 (Voice - Toll free)
800-939-1019 Fax

Autism

Autism Research Institute (ARI)

ARI publishes the Autism Research Review International.
4182 Adams Avenue
San Diego, CA 92116
866-366-3361
877-644-1184 x5 (Spanish)
Fax: 619-563-6840
www.autism.com

Autism Society of America (ASA)

4340 East-West Hwy, Suite 350
Bethesda, MD 20814
301-657-0881 or 800-328-8476
Fax: 800-FAX-0899
www.autism-society.org

The Autism Project of Rhode Island

1516 Atwood Avenue
Johnston, RI 02919
401-785-2666
info@theautismproject.org

**Online Aspergers Syndrome
Information and Support (OASIS)**
www.aspergersyndrome.org

Brain Injury

Brain Injury Association of RI
935 Park Avenue, Suite 8
Cranston, RI 02910-2743
401-461-6599
Fax: 401-461-6561
www.info@biaofri.org

Health-Helper

Brain injury, concussion and health
resources
www.health-helper.com

Brain Talk Communities

Online patient support groups for
neurology
617-726-2000
TDD: 617-724-8800
www.massgeneral.org

Rehabilitation Hospital of RI

Support group for those coping with head
injuries.
116 Eddie Dowling Highway
North Smithfield, RI 02896
401-766-0800
www.rhri.net

Cancer

American Cancer Society
The American Cancer Society Center
250 Williams Street
Atlanta, GA 30303
404-315-1123
Fax: 404-315-9348
www.cancer.org

Local American Cancer Association of RI

931 Jefferson Boulevard, Suite 3004
Warwick RI 02886
401-722-8480
1-800-ACS-2345
TTY: 1-866-228-4327
Fax: 401-421-0535

Cerebral Palsy

United Cerebral Palsy of RI (UCP)
200 Main Street, Suite 210
P.O. Box 36
Pawtucket, RI 02862
401-728-1800
Fax: 401-728-0182
www.ucpri.org



Deaf-Blind

**National Family Association for
Deaf-Blind**
141 Middle Neck Road
Sands Point, NY 11050-1129
800-255-0411 x 275
TTY: 516-944-8637
Fax: 516-883-9060
www.NFADB@aol.com

Developmental Disabilities

**The Arc of Blackstone Valley Chapter
RIARC**
115 Manton Street
Pawtucket, RI 02861-4332
401-727-0150
www.bvcriarc.org
contact@bvcriarc.org

The Blackstone Valley Chapter provides
services and support to persons with
developmental disabilities and their
families. The Center assists individuals in
making decisions and taking responsibility
for their lives, and helps the commu-
nity learn about the abilities and poten-
tial of citizens with special needs.

Program services include:

- Living (residential) support
- Community resource
identification
- Behavioral & psychosocial services
- Employment support and access
- Physical therapy services
- Personal wellness support
- Education services
- Nutritional and related health services
- Community inclusion support
- Speech and language services
- Community recreational services
- Vocational evaluation
- Nursing services and supports

Cranston Arc

111 Comstock Parkway
Cranston, RI 02921-2002
401-941-1112
www.cranstonarc.org

The mission of Cranston Arc is to em-
power people with differing abilities to
claim and enjoy their rights to dignity
and respect. The Arc believes everyone
has abilities, and can be a participating
member of society. Cranston Arc pro-
vides social, recreational and vocational
services for children and adults with
developmental disabilities including day
programs, residential programs, respite
programs, and recreational activities.

Greater Providence Arc

220 Woonasquatucket Ave
North Providence, RI 02911-3196
401-353-7000
www.fogartycenter.org

The Arc of the United States

1660 L Street, NW, Suite 301
Washington, DC 20036
202-534-3700
800-433-5255
Fax: 202-534-3731
www.TheArc.org

Diabetes

American Diabetes Association
National Call Center
1701 North Beauregard Street
Alexandria, VA 22311
703-549-1500 or 800-342-2383
Fax: 703-549-6995
www.diabetes.org

American Diabetes Association of RI

146 Clifford Street
 Providence, RI, 02903
 401-351-0498
 Fax: 401-351-1674

Down Syndrome**Down Syndrome Society of RI**

99 Bald Hill Road
 Cranston, RI 02920
 401-463-5751
 Fax: 401-463-53337
 TDD: 1-800-745-5555
 www.dssri.org

Epilepsy**American Epilepsy Society**

342 North Main Street
 West Hartford, CT, 06117-2507
 860-586-7505
 Fax: 860-586-7550
 www.aesnet.org

Epilepsy Foundation of America

8503 LaSalle Road
 Towson, MD 21286-5915
 410-828-7700
 800-492-2523
 www.efa.org

Epilepsy Foundation Massachusetts, Rhode Island, New Hampshire & Maine

8301 Professional Place
 Landover, MD 20785
 800-332-1000
 866-748-8008 - Spanish

Genetic Disorders**Alliance of Genetic Support Groups**

4301 Connecticut Avenue NW, Suite 404
 Washington, DC 20008-2369
 202-966-5557
 800-336-GENE
 Fax: 202-966-8553
 www.geneticalliance.org

National Organization for Rare Disorders (NORD)

55 Kenosia Avenue
 PO Box 1968
 Danbury, CT 06813-1968
 203-744-0100
 800-999-6673
 TDD: 203-797-9590
 Fax: 203-798-2291
 www.rarediseases.org

MUMS: National Parent to Parent Network

150 Custer Court
 Green Bay Wisconsin 54301-1243
 920-336-5333 or 877-3365333
 Fax: 920-339-0995
 www.netnet.net/mums

Hearing Impairment**National Association of the Deaf (NAD)**

8630 Fenton Street, #820
 Silver Spring, MD 20910
 301-587-1788
 TTY: 301-587-1789
 Fax: 301-587-1791
 www.nad.org

Alexander Graham Bell Association for the Deaf and Hard of Hearing

3417 Volta Place, N.W
 Washington, DC 20007-2778
 202-337-5220
 TTY: 202/337-5221
 Fax: 202/337-8314
 info@agbell.org
 www.agbell.org

American Society for Deaf Children

800 Florida Avenue NE, #2047
 Washington, DC 20002-3695
 800-942-2732
 Fax: 410-795-0965
 www.deafchildren.org
 asdc@deafchildren.org
 Hotline: 1-800-942-2732

First Connections -Training Resource Project for Newborn Screening

3 Capitol Hill Room 302
 Providence, RI 02908
 401-222-2312
 401-222-1442
 Voice: 1-800-942-7434; TTY: 711
 Outreach Coordinator
 546 Main Road, Suite 1, 2nd Floor
 Tiverton, RI 02878

**Relay RI**

RI Relay Provides communications between individuals using TTY devices and persons using regular telephones.
 Dail 711 TTY Relay
 401-621-2684 Voice/TTY
 401-685-1390 Video Phone
 Fax: 401-264-2609

Rhode Island Association of the Deaf (RIAD)

P.O. Box 40853
 Providence, RI 02940
 TDD: 401-431-0465
 Relay: 800-745-6575
 riadseca@gmail.com
 Provides support and active advocacy for the deaf and hard of hearing citizens of Rhode Island.

RI Commission on the Deaf and Hard of Hearing

One Capitol Hill, Ground Level
 Providence, RI 02908-5850
 401-256-5511
 401-222-1205
 Videophone: 401-256-5511
 Fax: 401-222-5736
 cdhh@cdhh.ri.gov

RI Deaf World Web

www.deafworldweb.com
 RI Speech-Language-Hearing Association
 PO Box 9241
 Providence, RI 02940
 401-455-7472

Self Help for the Hard of Hearing (SHHH): RI Chapter

Sargent Rehabilitation Center
 800 Quaker Lane
 Warwick RI
 886-6600
 shhhsargents@usa.com.
 www.shhhsargents.homestead.com

Hearing Loss Association of America

7910 Woodmont Avenue, Suite 1200
 Bethesda, MD 20814
 301-657-2248
 TTY -301-913-9413
 info@hearingloss.org

Heart Disorders

American Heart Association

7272 Greenville Avenue
Dallas, TX 75231-4596
214-706-1176
800-242-8721
Fax: 214-706-2139
www.americanheartassociation.org

Local American Heart Association

Providence
1 State Street, Suite 200
Providence, RI 029038401-330-1700
Fax: 401-330-1720

HIV/AIDS

AIDS Care Ocean State

18 Parkis Avenue
Providence, RI 02907
401-521-3603
Fax: 401-861-2981
www.aidscares.org
HIV/AIDS in Rhode Island (including anonymous & confidential testing sites)
www.doh.state.ri.us/disprev/communicable/hiv_aids.htm

AIDS Project RI

404 Wickenden Street
Providence, RI 02906
Hotline: 800-726-3010
401-831-5522
TDD: 401-831-5693
Fax: 401-454-0299
www.aidsprojectri.org
Mailing Address:
P.O. Box 6688
Providence, RI 02940-6688

Learning Disabilities

National Adult Literacy & Learning Disabilities Center (NALLD)

Academy for Educational Development
National Institute for Literacy
1775 I Street, NW; Suite 730
Washington, DC 20006-2401
202-233-2025
202-233-2050
www.nifl.gov

Multiple Sclerosis

National Multiple Sclerosis Society, RI Chapter

205 Hallene Road #209
Warwick, RI 02886
401-738-8383
Fax: 401-738-8469
1-800-FIGHT-MS
www.nmssri.org

Rare Disorders and Diseases

Search and Respond

C/o Exceptional Parent Magazine

416 Main Street
Johnstown, PA 15901
814-361-3860
800-372-7368
Fax: 814-3613861
www.eparent.com

National Organization for Rare Disorders (NORD)

55 Kenosia Avenue
PO Box 1968
Danbury, CT 06813-1968
203-798-2291
203-744-0100
800-999-6673 TDD: 203-797-9590
www.rarediseases.org

Speech Disorders

RI Speech-Language-Hearing Association
PO Box 9241
Providence, RI 02940
401-455-7472

Spina Bifida

Spina Bifida Association

4590 MacArthur Boulevard
NW Suite 250
Washington, DC 20007
202-944-3285
800-621-3141
sbamar@sbamar.org
Web: <http://www.sbamar.org>

Spina Bifida

SBA of Massachusetts
25 Birch Street, Bldg. B
Milford, MA 01757
508-482-5300
Toll Free: 888-479-1900
Fax: 508-482-5301
edugan@sbaMass.org
www.sbaMass.org

Transverse Myelitis

Transverse Myelitis Information

www.myelitis.org

Visual Impairments

American Foundation for the Blind

2 Penn Plaza, Suite 1102
New York, NY 10121
212-502-7600
800-232-5463
www.afb.org

IN-SIGHT

IN-SIGHT in Productive Living for the Blind is a private, non-profit organization incorporated in 1925 to serve the needs of Rhode Island's blind and visually impaired population of all ages. IN-SIGHT gives people the opportunity to lead more mobile, independent and productive lives.

43 Jefferson Boulevard
Warwick, RI 02888
401-941-3322
401-941-3356



IN-SIGHT Radio

Is a non-profit, non-commercial, closed circuit radio reading service for the blind and print-handicapped of Rhode Island and surrounding areas. IN-SIGHT RADIO provides current printed material (newspapers, magazines, books) to listeners who are unable to use printed materials due to a visual or a physical disability. Half of each broadcast day consists of readings taken from national, state and local newspapers. Emphasis is given to features that are unique to a newspaper such as food advertisements, editorials, death notices, and columns. In addition, the programs are delivered to homes through four cable television systems. To be eligible for IN-SIGHT RADIO a person must have a visual or physical handicap that prevents him or her from reading conventional printed material. One time fee for \$50 receiver.

National Library Service for the Blind and Physically Handicapped

www.loc.gov/nls

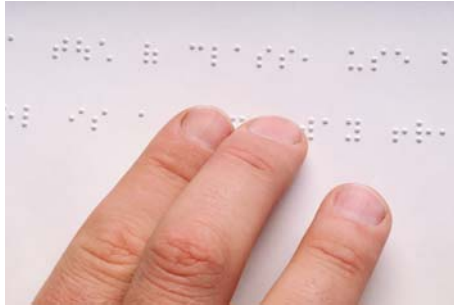
OSCIL Sign Language Interpreter Referral Service

1944 Warwick Avenue
Warwick, RI 02889
401-738-1013 x13
1-866-857-1161
TDD: 401-738-1015
Fax: 401-738-1083
www.oscil.org

Requests for an interpreter should be made at least two weeks in advance. Be sure to leave the following information with the referral service: agency name, address, telephone number, and contact person; date interpreter is needed; location, time and length; and nature of event for which the interpreter is needed; type of sign language interpreter preferred by consumer (ASL, Signed English, Oral).

Services for the Blind and Visually Impaired (SBVI)

40 Fountain Street
Providence, RI 02903
401-421-7005
TDD: 401-421-7016
Spanish: 401-272-8090
Fax: 401-222-3574
www.ors.state.ri.us



Talking Books Plus: RI Regional Library for the Blind and Physically Handicapped

The Regional Library serves as a public library for eligible persons residing in Rhode Island by loaning special reading materials and equipment free of charge. Books recorded on cassettes as well as large print and Braille books are mailed postage free to individuals qualifying for this service. Special cassette and talking book machines specifically designed for use with the recorded materials are issued along with the materials. All of the services mentioned are available to persons of any age who qualify on the basis of a visual or physical handicap that prevents them from using conventional print materials, and who can provide certification by a competent authority. Regional Libraries are located in all states in the United States. The National Library Service for the Blind and Physically Handicapped (NLS), a program sponsored by the Library of Congress, provides all talking books and the equipment on which they are played.

Vision Services Program at the Sherlock Center on Disabilities

The Vision Services Program provides services to children who are blind or visually impaired.

600 Mt. Pleasant Avenue
Providence, RI 02908
401-456-8912
www.sherlockcenter.org

Rhode Island Services for Children and Youth with Dual Sensory Impairment at the Sherlock Center on Disabilities Rhode Island College

Rhode Island Services for Children and Youth with Dual Sensory Impairment This federally funded project provides training and technical assistance related services to children and youth with dual sensory impairments (vision and hearing impairments). Dual sensory impairments means having both auditory and visual impairments that create such severe communication and other developmental and learning needs that they cannot be appropriately educated without special education and related services.

600 Mount Pleasant Avenue
Providence, RI 02908
401-456-8072
Fax: 401-456-8150
TDD: 401-456-8773

Children's Hospitals

Hasbro Children's Hospital
593 Eddy Street,
Providence, RI 02905
401-444-4000
www.lifespan.org

Boston Children's Hospital
300 Longwood Avenue
Boston, MA
617-355-6000
617-730-0152 TTY
www.childrenshospital.org

Psychiatric Hospitals

Arbour-Fuller Hospital
200 May Street
South Attleboro, MA 02703
508-761-8500
www.arbourhealth.com

Bradley Hospital

A psychiatric center for children, adolescents, and their families. Also provides in-home services.
1011 Veterans Memorial Parkway
East Providence, RI 02915
401-432-1000
www.lifespan.org

Butler Hospital

345 Blackstone Boulevard
Providence, RI 02906
401-455-6200
www.butler.org

Ronald McDonald House of Providence

45 Gay Street
Providence, RI 02905
401-274-4447
401-751-3730
www.prmh.org

The Ronald McDonald House provides a home-away-from-home for families of children receiving treatment at local hospitals, primarily Women & Infants, Hasbro Children's and Bradley Hospitals. Families of pregnant women in need of prolonged hospitalization and families of premature infants also are welcome at the House.

Therapy Services

This includes resources for Occupational, Physical, Speech, Social Skills, and Therapeutic Recreation.

Shriner's Hospitals

Springfield Shriner's Hospital

Orthopedic
516 Carew Street
Springfield, MA 01104
413-735-1234
413-787-2000
414-787-2009
www.shrinershq.org

Boston Shriner's Hospital, Burn Center

51 Blossom Street
Boston, MA 02114
617-722-3000
Fax: 617-523-1684
Emergency Referral: 800-255-1916

Occupational, Speech and Physical

RI American Physical Therapy Association at the University of Rhode Island

25 West Independence Way, Suite J
Kingston, RI 02881-0180
401-874-5001
401-874-5630
www.ptp.uri.edu
bmarcoux@mail.uri.edu

American Occupational Therapy Association

4720 Montgomery Lane
PO Box 31220
Bethesda, MD 20824-1220
301-652-2682
301-652-7711
TDD: 1-800-377-8555

RI Occupational Therapy Association

PO Box 8585
Warwick, RI 02888
401-345-8356
www.riota.org

The Groden Center, Inc.

Groden Center North
Day Program &
Family Services
86 Mount Hope Avenue
Providence, RI 02906
401-274-6310
www.grodencenter.org

Sargent Rehabilitation Center

800 Quaker Lane
Warwick, RI 02818
401-886-6600
www.sargentcenter.org

Therapeutic Recreation

Boys and Girls Clubs of Providence

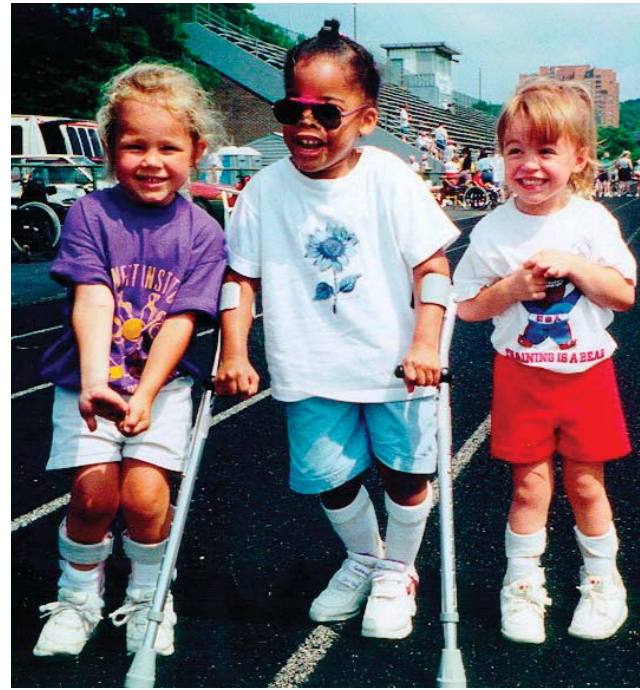
90 Ives Street
Providence, RI 02906
401-444-0750
401-444-0757
cso@bgprov.org

Boy Scouts of America

Narragansett Council
P.O. Box 14777
10 Risho Avenue
East Providence, RI 02914-0777
401-351-8700
401-351-5515
infor@narragansettbsa.org

Disabled Sports USA

451 Hungerford Drive, Suite 100
Rockville, MD 20850
301-217-0960
301-217-0968
www.dsusa.org



Access 2 Adventure

P.O. Box 269
Tiverton, RI 02878
401-835-2959
www.access2adventure.net

Girl Scouts of RI

125 Charles Street
Providence, RI 02904
401-331-4500
1-800-331-0149
Fax: 401-421-2937
www.girlscouts.org
www.gsri.org

Greenlock Therapeutic Riding Center

55 Summer Street
Rehoboth, MA 02769
508-252-5814
Fax: 508-252-5814
greenlock@gmail.com
www.greenlock.org

Groden Center

86 Mount Hope Avenue
Providence, RI 02906
401-274-6310
www.grodencenter.org

Impossible Dream Park

575 Centerville Road
Warwick, RI 02886
401-823-5566

John Hope Settlement House

7 Thomas P. Whitten Way
 Providence, RI 02903
 401-421-6993
 Fax: 401-454-5619
 Child Care Services: 401-421-4637 or
 401-421-4640
 Family Renewal Center: 401-6993 x367
 Youth, Adult and Family Wellness Center:
 401-421-6993 x369
www.johnhope.org

Piano and Voice Lessons

Music Education Experience teaching
 children with autism.
 401-333-9656

Health and Wellness - Summer Guide

PO Box 163
 Warren, RI 02885
 Phone: 401-247-0850
www.rifamilyguide.com

Sail to Prevail

PO Box 1264 Newport, RI 02840
 401-849-8898
www.sailtoprevail.org
 Provides mainstream, complimentary
 and recreational therapeutic services
 (including adaptive sailing program)
 that develop independent living skills for
 individuals who have experienced spinal
 cord injury and related nervous system
 disorders.

Special Olympics RI

33 College Hill Road Bldg # 31
 Warwick, RI 02886
 401-823-7411
 401-823-7415
www.specialolympics.org

Tides Family Services

215 Washington Street
 West Warwick, RI 02893
 401-822-1360
 401-823-4694
www.tidesfs.org
mail@tidesfs.org

VSA Arts

500 Prospect Street
 Pawtucket, RI 02860
 401-725-0247
www.vsarts.ri.org
www.accessiblerhodeisland.org

Mental/ Behavioral Health**N A M I**

National Association for Mental Health
 154 Waterman Street
 Suite 5B
 Providence, R.I. 02906
 401-331-3060
 800-749-3197
 Fax: 401-274-3020
www.namirhodeisland.org

**Department of Behavioral Healthcare,
Developmental Disabilities and Hospitals
Division of Behavioral Healthcare
Services (BHDDH)**

Barry Hall
 14 Harrington Road
 Cranston, RI 02920
 401-462-2339
 Fax: 401-462-6636
cstenning@bhddh.gov
www.bhddh.ri.gov

Mental Health Association of RI

500 Prospect Street, Wing C
 Pawtucket, RI 02860
 401-726-2285
 Fax: 401-365-6170
mhari@mhari.org
www.mhari.org

Parent Support Network

1395 Atwood Avenue, Suite 114
 Johnston, Rhode Island 02919
 401.467.6855
 800.483.8844,
 Fax: 401.467.6903
www.psnri.org

Providence Community Action (ProCap)

518 Hartford Avenue
 Providence, RI 02909
 401-273-2000
 401-228-3078
 401-273-2007
 866-779-5049

**RI Council of Community Mental
Health Centers (RICCMHO)**

40 Sharpe Drive, Suite 3
 Cranston, RI 02920-4485
 401-228-7990
 401-228-7979

**National Association of State Alcohol
and Drug Abuse Directors**

1025 Connecticut Avenue NW, Suite 605
 Washington, DC 20036
 202-293-0090
 Fax: 202-293-1250
dcoffice@nasadad.org
www.nasadad.org

**Rhode Island Council on Alcoholism
and Other Drug Dependence Helpline
RICAODD**

500 Prospect Street, Suite 202
 Pawtucket, RI 02860
 866-ALC-Drug
 401-725-0410
 Fax: 401-725-0768

**Substance-Abuse Related Communi-
cable Diseases**

www.health.state.ri.us

**Children's Intensive Services
Community Counseling Center**

103 Bacon Street
 Pawtucket RI 02860
 401-729-8701
 Hotline: 402-723-1915

Community Counseling Gateway

160 Beechwood Avenue
 Pawtucket RI 02860
 401-722-4282
 Emergency number: 401-723-1915

East Bay Mental Center, Inc.

2 Old County Road
 Barrington, RI 02806
 401-246-1195
 401-246-1986 TDD
 24 hour Emergency: 401-246-0700

The Kent Center

2746 Post Road, Suite 104
 Warwick, RI 02886
 401-732-5656
 Emergency number: 401-738-4300

Web Resources

**CMHS' Knowledge Exchange Associa-
tion (Center for Mental Health Services)**
www.mentalhealth.org

**National Clearinghouse for Alcohol and
Drug Information**

www.health.org

National Empowerment Center

www.power2u.org

National Institute of Mental Health (NIMH)

www.nimh.nih.gov

National Technical Assistance Center (NTACT)

www.nasmhpd.org/

National Health Information Center

www.health.gov/nhic/
pubs/2010tollfreenumbers/tollfreenumbers1.htm

Hepatitis C Support Project

www.hcadvocate.org

Youth and Family

The Kent Center

2756 Post Road
Warwick RI 02886
401-691-6000
www.thekentcenter.org

Gateway

Johnston and Northwestern RI
1443 Hartford Avenue
Johnston, RI 02919
401-273-8100
888-841-5252

Newport County Community Mental Health Center

127 Johnny Cake Hill
Middletown, RI 02842
401-846-1213
Fax: 401-848-9151
info@nccmhc.org

The Providence Center

520 Hope Street
Providence, RI 02906
401-276-4000
Intake: 401-276-4020
www.providencecenter.org

South Shore Community Mental Health

4705A Old Post Road, 1A
South Charleston, RI 02813
401-364-7705
401-789-1367

East Bay Community Action Program

19 Broadway Street
Newport, RI 02840
401-847-7821
www.ebcap.org
www.citizensenergy.com

Gateway Health Services

160 Beechwood Avenue
Pawtucket, RI 02860
401-722-5573

Comprehensive Community Action Program

311 Doric Ave
Cranston, RI 02910
401-467-9610
Fax: 401-467-9030
www.comcap.org

Family Services, Inc.

134 Thurbers Avenue
Providence, RI 02905
401-331-1350

John Hope Settlement House

7 Thomas P. Whitten Way
Providence, RI 02903
401-421-6993
Fax: 401- 454-5619
johnhope.org/careers

Kent County Mental Health Center

2746 Post Road, Suite 104
Warwick, RI 02886
401-732-5656
Emergency number: 401-738-4300

Gateway Healthcare Youth Guidance Division

82 Pond Street
Pawtucket, RI 02860
401-725-0450

South Shore Community Mental Health Center

4705A Old Post Road, 1A South
Charlestown, RI 02813
401-364-7705

Family Resources Community Action

245 Main Street
Woonsocket, RI 02895
401-766-0900
TDD: 401-767-4081
Fax: 401-766-8737
www.famresri.org



Community Mental Health Centers in Rhode Island

Community Mental Health Centers provide:

- Emergency service
- Inpatient services
- Psychiatric services
- Medication maintenance
- Community residences
- Psychiatric rehabilitation including employment

Counseling Services

40 Sharpe Drive
Cranston, RI 02920
401-228-7990
401-228-7979

East Bay Center, Inc.

2 Old County Road
Barrington, RI 02806
401-246-1195
Intake: 401-431-9870

The Kent Center *(listed on pg. 34)*

Gateway Health Care *(listed on pg. 34)*

Newport County Community Mental Health Center *(listed on pg. 34)*

The Providence Center *(listed on pg. 34)*

South Shore Mental Health Center *(listed on pg. 34)*

Adams – Farley Counseling Center

2 Old County Road
Barrington, RI 02806
401-246-1195
401-246-0700 Emergency

Adams-Farley Counseling Center

610 Wampanoag Trail
East Providence, RI 02915
401-431-9870
401-246-0700 Emergency

East Bay House

Group Home
803 Willett Avenue
East Providence, RI 02915
401-433-5400

Main Street House

Group Home
945 Main Street
Warren, RI 02885
401-245-5420

Crossroads

160 Broad Street
Providence, RI 02903
401-521-2255

Women, Infants, Children Program (WIC)

This health and nutrition program promotes health and development through good nutrition. The program is for pregnant and breastfeeding women and children up to age 5 who are at nutritional risk. Families may apply to the program if their income is at or below 185 percent of the federal poverty level. Additionally, families who currently receive benefits from Medical Assistance, Katie Beckett, RIte Care, Family Independence Program (FIP), and the Food Stamps Program (SNAP) may also apply for WIC benefits. Immigrant women and children may also be eligible. (Individuals with or without documented status are included.)

Rhode Island Department of Health; Women, Infants, Children Program

3 Capitol Hill, Room 302
Providence, RI 02908-5097
401-222-2231
Fax: 401-222-6548
TTY: 711

WIC Clinics in Rhode Island:

Chad Brown Health Center

285A Chad Brown Street
Providence 02908
401-831-0020 x22

Women and Infants Hospital

2 Dudley Street suite 565
Providence 02905-2401
401-274-1122 x2798

Allen Berry Health Center

202 Prairie Avenue
Providence 02905
401-444-0570



Capitol Hill Health Center

40 Candace Street
Providence 02908
401-444-0550

Central Health Center

239 Cranston Street
Providence 02907
401-444-0580

Olneyville Health Center

100 Curtis Street
Providence 02909
401-444-0540

Chafee Health Center

One Warren Way
Providence, RI 02905
401-444-0423

Dental Clinic

557 Broad Street
Providence, RI 02907
401-444-0430

St. Joseph Health Center

21 Peace Street
Providence 02907
401-456-3000

International Institute of RI

645 Elmwood Avenue
Providence, RI 02907-3313
401-461-5940

Children's Friend & Service Independence SquareCare - Pawtucket office
500 Prospect Street
Pawtucket, RI 02860
401-721-6416

Children's Friend & Service Progreso Latino
626 Broad Street
Central Falls, RI 02863
401-728-5936/5920

Thundermist Health Association
191 Social Street, 9th Floor
Woonsocket, RI 02895-3240
401-767-4100

Tri-Town Health Center
1126 Hartford Avenue
Johnston, RI 02919-7109
401-351-2750
www.tri-town.org

Family Health Services Center
1090 Cranston Street
Cranston, RI 02920-7323
401-943-1981

West Bay Community Action
226 Buttonwoods Ave
Warwick, RI 02886
401-732-9090

West Warwick Community Health Center
53 Providence Street
West Warwick, RI 02893
401-826-3230
Fax: 401-827-8278

Family Health Services Coventry
191 MacArthur Blvd.
Coventry, RI 02816-7244
401-828-5335
Fax: 401-828-2914
401-828-2914

Wood River Health Services
823 Main Street
Hope Valley, RI 02832
401-539-2463

Health Center of South County
One River Street
Wakefield, RI 02879-3214
401-783-0523

New Visions Community Health Center
19 Broadway
Newport, RI 02840
401-847-7821

New Visions for Newport Country Inc Health Center
1048 Stafford Road
Tiverton, RI 02878-2507
401-624- 4736

East Bay Community Action Program
100 Bullocks Point
East Providence, RI 02915-5351
401-437-1008
Fax: 433-1598
www.ebcap.org

Family Resource Counselor Program

This program supports community health centers and hospital clinics to enroll families in preventive health and family support programs including Medicaid/Rite Care; Women, Infants, Children (WIC); Food Stamps; and the Family Independence Program (FIP). Counselors help families apply for programs and let them know what they may be eligible for.

Families can apply at the following locations:

Bayside Family Health Care
308 Callahan Road
North Kingstown, RI 02852
401-295-9706

Health Center of South County
One River Street
Wakefield, RI 02879-3214
401-783-0523

Blackstone Valley Community Health Care
42 Park Place
Pawtucket, RI 02860
401-722-0081

Memorial Hospital
111 Brewster St
Pawtucket, RI 02860
401-729-2209

Chad Brown Health Center
285 A Chad Brown Street
Providence, RI 02908
401-831-0020 or 401-274-6339

New Visions for Newport County
19 Broadway
Newport, RI 02840
401-848-2160



New Visions for Newport County
8 John H. Chafee Blvd.
Newport, RI 02840
401-367-2001

Family Health Services
1090 Cranston Street
Cranston, RI 02920
401-943-1981

Family Health Services
Coventry, RI
401-828-5335

Hasbro Children's Hospital/RI Hospital
593 Eddy Street
Providence, RI 02903
401-444-4300
401-444-5483

WellOne in Pascoag
PO Box 312
36 Bridge Way
Pascoag, RI 02859
401-568-7664
Fax: 401-568-7949
TDD: 800-745-5555

WellOne in Foster
142A Danielson Pike
(Route 6)
Foster, RI 02825
401-647-3702
Fax: 401-647-5380
TDD: 800-745-5555

WellOne in North Kingstown

308 Callahan Rd.
 North Kingstown, RI 02852
 401-295-9706
 FAX: 401-295-0920
 TDD: 800-745-5555

St. Joseph's Health Services

21 Peace Street
 North Providence, RI 02904
 401-456-3000
 www.saintjosephri.com

East Bay Family Health Care

100 Bullocks Point Avenue
 Riverside, RI 02915
 401-437-1008

Thundermist Health Associates

450 Clinton Street
 Woonsocket, RI 02895
 401-767-5444
 Fax: 401-235-6899

Tri-Town Health Center

1126 Hartford Avenue
 Johnston, RI 02919
 401-351-2750
 Fax: 401-351-6611
 www.tri-town.org

Women and Infants Hospital

101 Dudley Street
 Providence, RI 02905
 401-274-1100
 www.womenandinfants.org

Wood River Health Services

823 Main Street
 Hope Valley, RI 02832
 401-539-2461
 www.woodriverhealthservices.org

Administration on Developmental Disabilities

The Administration on Developmental Disabilities (ADD) is the federal agency that administers the four programs authorized by the Developmental Disabilities Act.

These programs include the Developmental Disabilities Council's Protection and Advocacy Systems, University Affiliated Programs and Projects of National Significance.

Administration on Developmental Disabilities - Administration for Children and Families, U.S. Department of Health and Human Services

Mail Stop: HHH 405-D
 370 L'Enfant Promenade, S.W.
 Washington, D.C. 20447
 202-690-6590
 Fax:: 202-690-6904 or 202-205-8037

Advocates in Action

(statewide self-advocacy group)
 P.O. Box 41528
 Providence, RI 02940-1528
 401-785-2028
 TDD: 800-745-5555
 www.aina-ri.org

Commission for Human Rights

The objective of the Commission for Human Rights is to enforce anti-discrimination laws mandated by state and federal law.

180 Westminster Street, 3rd Floor
 Providence, RI 02903
 401-222-2661
 TTY: 401-222-2664
 Fax: 401-222-2616

Disability Rights Activist

www.disrights.org

Justice for All

www.jfa.net

National Disability Rights Network Protection and Advocacy for Individuals with Disabilities (NDRN)

The NDRN represents federally mandated programs that protect the rights of persons with disabilities.

900 Second Street, NE, Suite 211
 Washington, DC 20002
 202-408-9514
 Fax: 202-408-9520
 TTY: 202-408-9521
 info@ndrn.org

Rhode Island Disability Law Center

RIDLC is a non-profit organization that provides free legal assistance to persons with disabilities and distributes information on the rights of people with disabilities.

275 Westminster Street, Suite 401
 Providence, RI 02903-3434
 401-831-3150
 TDD: 401-831-5335
 Fax: 401-274-5568
 www.info.ridlc.org

Family Voices and RI Family to Family Network at the Rhode Island Parent Information Network

Family Voices provides information, support and training for families of children with special health care needs and the professionals caring for them. Family Voices offers healthcare information, family to family support and leadership development.

1210 Pontiac Avenue
 Cranston, RI 02920
 401-270-0101
 Fax: 401-270-7049
 www.ri-pin.org
 familyvoices@ri-pin.org

Family Voices (National)

2340 Alamo SE, Suite 102
 Albuquerque, NM 87106
 888-835-5669
 www.familyvoices.org



Assistance, Information & Advocacy

Rhode Island Housing and Mortgage Finance Company

As the state's principal housing agency, RI Housing helps low and moderate income Rhode Islanders find houses and apartments they can afford, low-interest loans to buy a house, find an affordable apartment, loans for repair home, or remove hazardous material such as lead paint and asbestos. RI Housing's mission is to assist Rhode Islanders who, by reason of income, special need or circumstance, are unable to fairly obtain and sustain a healthy, affordable home.

44 Washington Street
Providence, RI 02903-1721
401-457-1234
TTY: 401-450-1394
800-427-5560
En Español: 401-457-1122
www.rihousing.com

Housing Resources Commission The Rhode Island Housing Resources Commission (HRC)

HRC was created by legislation in 1998 to be the planning and policy, standards and programs agency for housing issues. The Commission's purpose is to ensure that all Rhode Islanders have access to safe and affordable housing. A 27 member Commission, representing a wide range of constituents, from government to providers to advocates.

One Capitol Hill, 3 Floor
Providence, RI 02903
401-222-4894
Fax: 401-222-2803
www.hrc.state.ri.us

The National Dissemination Center for Children with Disabilities (NICHCY)

1825 Connecticut Ave NW, Suite 700
Washington, DC 20009
800-695-0285
202-884-8200
Fax: 202-884-8441
nichcy@aed.org
www.nichcy.org

Online Aspergers Syndrome Information and Support (OASIS)

www.aspergers.com

OSCIL Drop-In Center

Ocean State Center for Independent Living-OSCIL
Social and recreational group for ages 13 to 30.
1944 Warwick Avenue
Warwick, RI 02889-2448
401-738-1013
www.oscil.org

Project Vote Smart

www.vote-smart.org

CanDo.com

www.cando.com

Electronic Benefit Transfer (EBT)

888-979-9939
www.fns.usda.gov/fsp/ebt/

Rhode Island Works

The Department of Human Services' Rhode Island Works Program offers temporary cash assistance, health coverage, child care assistance, and help finding job training or a job.

This program is available for pregnant women and adults with children under age 18 (or under age 19 if child is a full-time student). Services are available statewide.

The RI Works Program encourages adult family members to work by offering the following benefits and support services:

- Cash assistance is provided on a temporary basis to needy families that meet certain guidelines.
- Health care is provided through the RIte Care Program. Families can choose a participating RIte Care health plan. (See pg. 18 & 21 for more information).
- Child care assistance is provided if needed.
- Assistance with finding work or job training is available.
- Food assistance is available through the Supplemental Nutrition Assistance Program - SNAP.
- Transportation reimbursement or bus passes are available to support preparation for employment.



Eligibility

Eligibility for the RI Works program is based on family income and resources. For more information, please make an appointment to see a DHS worker at a local DHS Office.

How to Apply

To apply, contact your local DHS Office. You will need to complete an application and provide proof of identity, income, assets/resources, and expenses.

DHS Info Line

Includes RIte Care, RI Works, Early Intervention, Children with Special Needs
401-462-5300
401-462-3363 TTY

Supplemental Nutrition Assistance Program (SNAP)

The Supplemental Nutrition Assistance Program (SNAP) can help individuals and families buy food. Anyone struggling financially to buy food and provide nutritious meals, may be eligible for the SNAP Program. You do not need to be participating in other DHS programs to receive SNAP benefits. You can be unemployed or working, preparing for work, receiving a pension, or homeless.

Individuals and families qualify for SNAP benefits based on their income, resources and the number of individuals in their household. The SNAP eligibility has recently changed. Now, most individuals, couples and families may qualify if their income is less than 185 percent of the Federal Poverty Level (FPL).

How to Apply:

You can apply online at www.dhs.ri.gov/FamilieswithChildren/FoodAssistance or call a **Community Action Program** in your area:

Providence
401-222-7272

Woonsocket
401-235-6200

Pawtucket
401-721-6600
800-984-8989

South County
401-782-4300
800-862-0222

Warwick
401-736-1400

RIte Share
401-462-0311

Electronic Benefit Transfer (EBT) Customer Service
888-979-9939

Child Support Enforcement
401-458-4400

Earned Income Tax Credit Information
800-829-1040
www.irs.gov

Medical Assistance Provider Help Desk
401-784-8100
800-964-6211

US Department of Agriculture (USDA)
1-800-221-5689
www.dhs.state.ri.us

WEmedia
www.wemedia.com

Disability Information

Ability to Independence - The VISUAL disAbility Expo for the disAbled
www.remote-ability.com

California State University, Northridge-Center On Disabilities
www.csun.edu/cod/index.php

CDC-National Center for Birth Defects and Developmental Disabilities
www.cdc.gov/ncbddd

Cornucopia of Disability Information
www.codi.buffalo.edu

Creativity Explored
www.creativityexplored.org

Dealing with Disability
www.metlife.com



Disability News Service
www.disabilitynews.org

Disability News Ticker
www.abilityinfo.com

GARAVENTA (Canada) LTD - Accessibility Solutions
www.garaventa.com

Health-Helper - Brain Injury, Concussion and Health Resources
www.health-helper.com

National Institute of Art & Disability
www.niadapt.org

National Library Service for the Blind and Physically Handicapped
www.lcweb.loc.gov/nls

On A Roll - Talk Radio on Life and Disability
www.onarollradio.com

RehabNET - Resource on Disability and Medical Rehabilitation
www.rehabnet.com/hc3.asp

Through the Looking Glass
www.lookingglass.org

Trace Research and Development Center
www.trace.wisc.edu



State Departments, Agencies and Commissions

Governor's Commission on Disabilities

John O. Pastore Center
41 Cherry Dale Court
Cranston, RI 02920-3049
401-462-0100
Fax: 401-462-0106
www.disabilities.ri.gov
www.gcd.state.ri.us

Rhode Island General Assembly

www.rilin.state.ri.us

Rhode Island Office of Rehabilitation Services

www.ors.ri.gov

Rhode Island Department of Children, Youth, and Families

www.dcyf.ri.gov

Rhode Island Department of Education

www.dcyf.state.ri.us

Rhode Island Department of Health

www.health.state.ri.us

Rhode Island Department of Human Services

888-DHS-3322
www.dhs.ri.gov

Rhode Island Department of Behavioral Healthcare, Developmental Disabilities and Hospitals (BHDDH)

www.bhddh.ri.gov

Child Care Subsidies, Department of Human Services

401-946-2300
1-800-516-2055
www.dhs.ri.gov

Office of Child Support Services Department of Human Services

800-638-KIDS
www.cse.ri.gov
www.dhs.ri.gov

Political Information

Congress

www.congress.org

Federal Election Commission - The National Mail Voter Registration Form

www.fec.gov/votregis/vr.htm

United States House of Representatives

David Cicicilline (D)

Washington Office:
128 Cannon HOB
Washington, DC 20515
401-225-4911
800-392-5772 (in Rhode Island)
Fax: 202-225-3290

Rhode Island Office:
249 Roosevelt Avenue, Suite 200
Pawtucket, RI 02860
401-729-5600
Fax: 401-729-5608

<https://cicilline.house.gov/contact-me>

United States House of Representatives James Langevin (D)

Washington Office:
109 Cannon HOB
Washington, DC 20515
202-225-2735
Fax: 202-225-5976

Rhode Island Office
300 Centerville Road, Suite 200 South
Warwick, RI 02886
401-732-9400
Fax: 401-737-2982

<https://langevin.house.gov/contact/email-me.shtml>

United States Senators

U.S. Senator Jack Reed (D)

Washington Office:
United States Senate
728 Hart Senate Office Building
Washington, DC 20510
202-224-4642
Fax: 202-224-4680

Providence Office:

U.S. District Courthouse
One Exchange Terrace
Suite 408
Providence, RI 02903-1173
401-528-5200



TDD 800-745-5555
Fax: 401-528-5242

Cranston Office:
1000 Chapel View Boulevard, Suite 290
Cranston, RI 02920-5602
401-943-3100
800-284-4200 (toll free in Rhode Island)
Fax: 401-464-6837

<http://reed.senate.gov/contact/index.cfm>

U.S. Senator Sheldon Whitehouse (D)

Washington Office:
Hart Senate Office Bldg Room 502
Washington, DC 20510
202-224-2921
Fax: 202-228-6362

Providence Office:
170 Westminster Street, Suite 1100
Providence, RI 02903
401-453-5294
Fax: 401-453-5085

<http://whitehouse.senate.gov/contact/>

Rhode Island Governor

Governor Lincoln D. Chafee
Office of the Governor
222 State House
Providence, RI 02903
401-222-2080
Fax: 401-222-8096
governor@governor.ri.gov

www.governor.ri.gov

Rhode Island Lt. Governor

Lt. Governor Elizabeth Roberts
Office of the Lt. Governor
State House, Room 116
Providence, RI 02903
401-222-2371
Fax: 401-222-2012
info@ltgov.state.ri.us

<http://www.ltgov.ri.gov/>

Information on state
representatives and other elected officials
is available on the website of the
Secretary of State:
www.state.ri.us.



Feedback FORM

We would like to know your thoughts about this guide, and suggestions you may have for inclusion in future updates. Please use the space below to share your comments or to report corrections. We especially appreciate comments about how you have or will use this information to help your child(ren) and/or yourself. Thank you!

Comments:

Corrections:

Page: _____	Page: _____
Page: _____	Page: _____
Correct Info: _____	Correct Info: _____
_____	_____
_____	_____

If you would like to receive periodic updates of this guide, please complete the following information.

Name: _____

Agency: _____

Title: _____

Address: _____

City/State/Zip: _____

Telephone: _____

Email: _____

I am a: _____ Parent of a child with special needs
(please ✓
all that
apply) _____ Service Provider
_____ Teacher / Educator
_____ Individual with special needs
_____ Other (please describe) _____

Please send this form to
Family Voices at the Rhode Island
Parent Information Network
1210 Pontiac Avenue
Cranston, RI 02920
fax: 401.270.7049
email: familyvoices@ripin.org

The information in this directory was obtained using Internet and print materials that were available at the time of its production. Wherever possible, phone numbers, mailing addresses, descriptions, web sites and e-mail addresses have been provided. Efforts have been made to ensure that the information is accurate and current at the time of publication. The inclusion of an entry does not imply endorsement of the services and/or supports provided by the organization, agency, or individual.

We would like to acknowledge all of those who have given their time and thoughtful comments/edits to the production of this Resource Guide.

This resource guide was created by the Rhode Island Parent Information Network in partnership with the Rhode Island Department of Health. The Health and Resources Administration (HRSA), Maternal Child Health Bureau (MCHB) provides funds for Family Voices Family to Family Health Information Centers.

Copyright © 2011



Family Voices and this publication are supported by the Rhode Island Department of Health, Office of Special Health Care Needs with funds from the Title V Maternal and Child Health Federal Grant.



www.ripin.org 401.270.0101

